

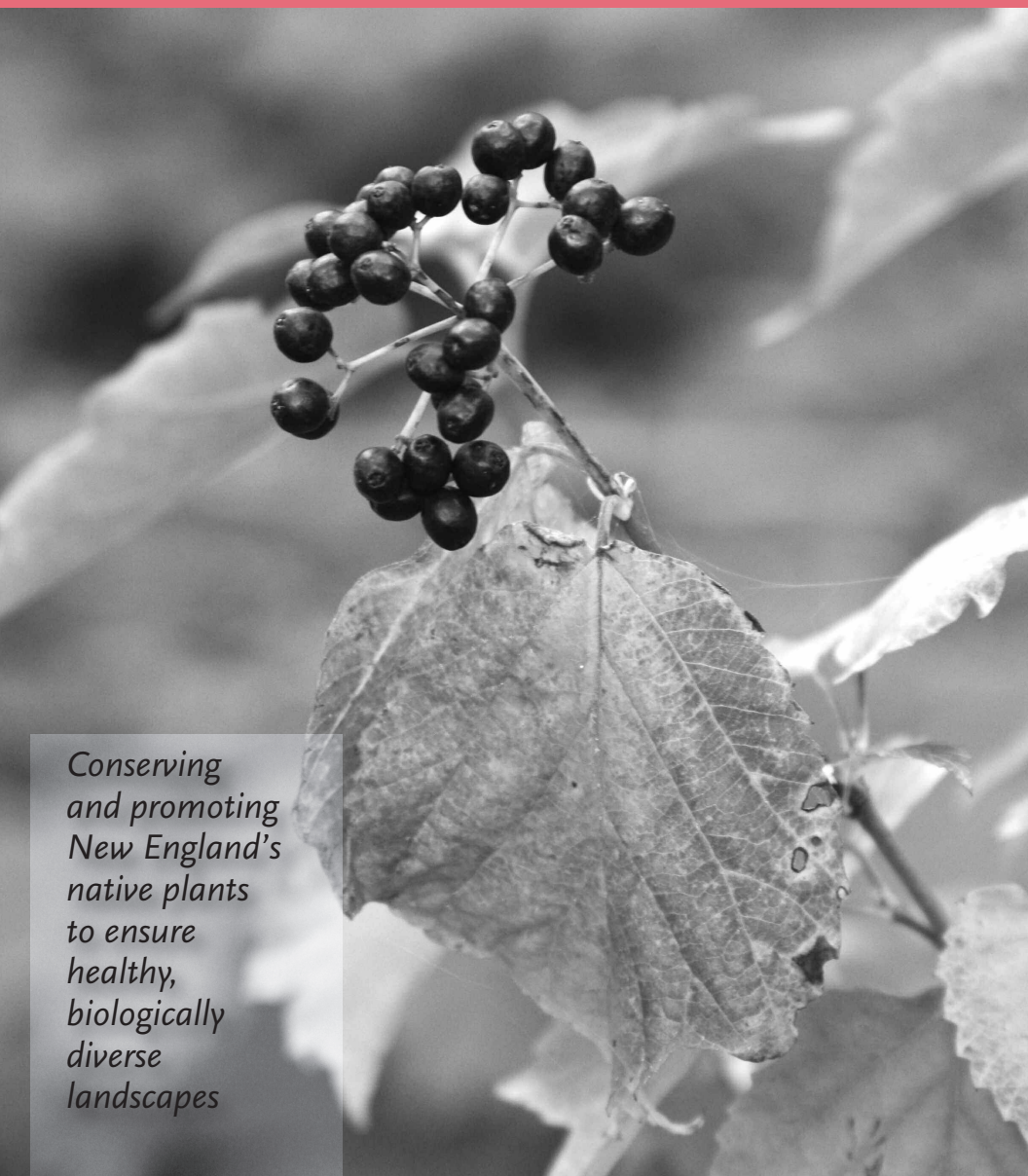
FALL/WINTER 2018

NEW ENGLAND  
WILD  
FLOWER  
SOCIETY



# learn+grow

THE PROGRAMS OF NEW ENGLAND WILD FLOWER SOCIETY



*Conserving  
and promoting  
New England's  
native plants  
to ensure  
healthy,  
biologically  
diverse  
landscapes*

The mission of New England Wild Flower Society is to conserve and promote the region's native plants to ensure healthy, biologically diverse landscapes.

Founded in 1900, the Society is the nation's oldest plant conservation organization and a recognized leader in native plant conservation, horticulture, and education.

The Society has its headquarters at Garden in the Woods, a renowned native plant botanic garden in Framingham, Massachusetts, that attracts visitors from all over the world. From this base, 25 staff and 750 volunteers work throughout New England to monitor and protect rare and endangered plants, collect and preserve seeds to ensure biological diversity, detect and control invasive species, conduct research, and offer a range of educational programs.

The Society also operates a native plant nursery at Nasami Farm in western Massachusetts and has seven sanctuaries in Maine, Massachusetts, New Hampshire, and Vermont that are open to the public.

Fall sneezeweed (*Helenium autumnale*)



## table of contents

Certificate Program .....	3
Special Events .....	5
Online Learning.....	6
Botany + Conservation .....	11
Field Studies .....	22
Horticulture + Design.....	29
Landscape Studies .....	37
Children + Families.....	40
Registration + Membership .....	41
Support .....	42

NEW ENGLAND WILD FLOWER SOCIETY  
 180 Hemenway Road, Framingham, MA 01701  
 T 508-877-7630 F 508-877-3658  
 TTY 508-877-6553  
 education@newenglandwild.org  
 www.newenglandwild.org

### Volume 11, Number 2, Fall/Winter 2018

*Learn + Grow* is published twice a year by New England Wild Flower Society. Member rates apply on all programs for current members. Annual membership dues start at \$40 for individuals. See page 41 for information.

Copyright© 2018 New England Wild Flower Society®. All rights reserved. No material in this publication may be reproduced or used in any way without written consent. For permission, contact Editor, New England Wild Flower Society, 180 Hemenway Road,

*This publication was made possible through the generosity of Jackie and Tom Stone.*

### On the Cover

*Viburnum acerifolium* (maple-leaved viburnum)  
 Photo by Dan Jaffe, New England Wild Flower Society



# regional index

Date	Program	Page	Date	Program	Page	Date	Program	Page
<b>ONLINE</b>			10/4	Fruit Morphology	15	<b>WESTERN MASSACHUSETTS</b>		
9/11	Plant Comm. of CT	7	10/5	Cambridge History	39	8/11	Plant Cyanotype	11
9/21	Plants 101	6	10/11	Invasive Plants	15	8/26	Seed Saving	30
10/9	Plant Comm. of VT	7	10/11	Autumn Meadow	27	9/6	Aquatic Plants of NE	13
10/11	Putting Garden to Bed	8	10/12	Desert Memorial Forest	27	9/8	Ecological Nursery	30
10/16	Ex-situ Conservation	8	10/14	Photography	31	9/15	Wetlands E. Leverett	25
10/19	Pollinator Gardening	6	10/18	Sustainable Site Design	31	10/14	Poll. Plants from Seed	31
11/1	Winter Branchlet ID	8	10/20	Autumn Bot. Illustra.	16	10/25	Framework Trees	16
11/13	Plant Comm. of ME	9	10/20	Back Bay History	16	11/18	Native Arrangements	33
12/4	Plant Comm. of RI	9	10/21	NE Plant Diversity: S1	17	11/30	Meadows 1-2-3	33
12/14	NE Alpine Plants	9	10/23	Designing Garden	32	12/8	Propagating from Seed	34
1/11	Plants 102	6	10/25	Future of GITW	32	1/20	Fruits and Seeds	19
1/11	Designing with Natives	6	10/27	Lichen Diversity	18	2/9	Understanding Soils	35
1/22	Conservation in CT	10	11/8	Res. Landscape Design	32	3/21	Right Plant, Right Place	36
2/26	Sanctuaries	10	11/9	What to Propagate	33	<b>CONNECTICUT RHODE ISLAND</b>		
<b>EASTERN MASSACHUSETTS</b>			11/10	Naked Shrubs	28	9/6	Pollinate in RI	5
8/8	Native Plants/Profess.	29	11/17	Rare Plant Conserv.	18	9/15	Natives at Casey Farm	38
8/11	Smartweeds	11	11/18	NE Plant Diversity: S2	17	10/21	Botany of CT Coast	28
8/11	Story Time	40	11/28	Low Maint. Gardening	33	<b>MAINE NEW HAMPSHIRE VERMONT</b>		
8/16	Adv. Plant Inventory	12	12/1	Winter Wildflowers	28	8/2	Pollinate in VT	5
8/18	Native Plants Book Talk	29	12/14	Design-less Gardening	34	8/4	Habitats of Acadia NP	22
8/26	Botany in Salt Marsh	23	1/9	Landscape for Life	35	8/18	Botany NH Coast	23
8/28	Native Woody Plants	30	1/10	Conservation Biology	18	9/7	Natives at Fells Estate	37
8/29	Grasses of the NE	12	1/15	Diversify Your Lawn	35	9/8	Pollinate in NH	5
9/6	Native Ferns	12	1/19	Wetland Shrubs	19	9/23	Ponemah Bog	26
9/8	NE Coastal Sand Dunes	24	1/31	Winter Botany	20	9/29	Coffin WF Reservation	26
9/10	Field ID Techniques	13	1/31	Plant Genetics	20	10/6	Pack Monadnock Mt.	26
9/14	Eustis Estate	38	2/5	Res. Landscape Design	32	10/28	Pollinator Symposium	5
9/15	Blue Hills Ferns	24	2/10	NE Plant Diversity: S3	17			
9/16	Rocky Summits	25	2/12	Climate Change	20			
9/19	Plant Form + Function	13	2/13	Wild Edibles	36			
9/20	Asters + Goldenrods	14	2/22	Alpine Zone Features	21			
9/29	Fall Wildflowers + Fruit	14	2/23	Rare Plant Families	21			
9/30	Rare Plant Seed Collect	14	3/12	Winter Pruning	36			
9/30	Great Meadows Late	39	3/14	Trends in Horticulture	36			
			3/23	Blooming Buttercups	21			

# *certificates in native plant studies*

Whether you are interested in taking classes for fun, to add breadth and depth to your existing knowledge and skills, or to advance your career, our self-paced certificate programs in Native Plant Studies offer a unique opportunity to learn about the region's flora. Students enrolled in our certificate programs in Field Botany and in Horticulture and Design learn about identifying, cultivating, and conserving native New England plants while gaining a greater appreciation for their ecological importance. Students actively participate in ongoing public and private efforts to preserve and restore native New England flora. We offer programs for both Basic and Advanced certificates. To enter the Advanced program, students must complete the Basic Certificate or have enough experience to qualify for a Basic Certificate.

---

## **CERTIFICATE ORIENTATION WEBINAR**

Watch this free webinar to learn about the curriculum and structure of the Society's certificate programs in Native Plant Studies.

**Program Code:** CER8000

---

## **FIELD BOTANY**

### **Basic Curriculum**

#### **Eight Core Courses** (all are required)

- Plant Form and Function
- Introduction to Plant Families
- New England Plant Communities
- Wildflowers of New England
- Framework Trees of New England
- Native New England Shrubs
- Field Identification Techniques
- Botanic Inventory Methods

#### **Four Elective Classes**

#### **Four Botanical Field Studies**

#### **Fifteen Hours of Community Service**

Students may volunteer with the Society or with a native plant or plant conservation-oriented organization.

### **Advanced Curriculum**

#### **Five Core Courses** (all are required)

- Conservation Biology
- New England Plant Diversity Sessions 1-5
- Advanced Plant Inventory Techniques
- Invasive Plants: Identification, Documentation, and Control
- Basic Wetland Identification and Delineation

#### **Four Elective Classes**

#### **Three Botanical Field Studies**

#### **Two Plant Diversity Workshops**

#### **Twenty-five Hours of Community Service**

Students must complete a Native Plant Community Service Leadership Project. Projects must benefit the community and further the Society's mission.

## ENROLL NOW!

Visit us online at [www.newenglandwild.org/learn/certificate](http://www.newenglandwild.org/learn/certificate) to learn more. There is a one-time certificate enrollment fee of \$30. Join the Society to receive discounts on programs.

### CERTIFICATE CREDIT KEY

*Most programs satisfy more than one certificate requirement; however, each program may only be credited once.*

**FB**=Field Botany basic

**Adv.FB**=Field Botany advanced

**HD**=Horticulture and Design basic

**Adv.HD**=Horticulture and Design advanced

**Field**=botanical, horticultural, or design Field Study

**Core**=Core Courses

**Elective**=Elective Classes

**PDW**=Design or Plant Diversity Workshop

### Continuing Education Units (CEUs)

Many of our programs, including these in our certificate requirement, qualify for continuing education units. Below is a list of CEUs we offer. Visit [www.newenglandwild.org/programs](http://www.newenglandwild.org/programs) for a list of qualifying programs.

**AOLCP** - Northeast Organic Farming Association Accredited Organic Land Care Professionals

**CFE** - Society of American Foresters' Continuing Forestry Education

**LACES** - American Society of Landscape Architects' Continuing Education

**MCA** - Massachusetts Certified Arborist

**MCH** - Massachusetts Certified Horticulturist

**MCLP** - Massachusetts Certified Landscape Professional

## HORTICULTURE AND DESIGN

### Basic Curriculum

#### Nine Core Courses (all are required)

- Residential Landscape Design
- Horticultural Techniques
- Understanding and Managing Soils
- Plant Form and Function
- Wildflowers of New England
- Native Herbaceous Plant Materials: Early Season
- Native Herbaceous Plant Materials: Late Season
- Native Woody Plant Materials
- Native New England Shrubs

#### Four Elective Classes

#### Four Horticulture and Design Field Studies

#### Fifteen Hours of Community Service

Students may volunteer with the Society or with a native plant or plant conservation-oriented organization.

### Advanced Curriculum

#### Four Core Courses (all are required)

- Landscape for Life
- Native Plants for Professionals
- New England Plant Communities
- Invasive Plants: Identification, Documentation, and Control

#### Four Elective Classes

#### Three Horticulture and Design Landscape Studies

#### Two Design Workshops

#### Twenty-five Hours of Community Service

Students must complete a Native Plant Community Service Leadership Project. Projects must benefit the community and further the Society's mission.

# special events

## POLLINATE NEW ENGLAND

Pollinate New England raises awareness of the steep decline in pollinators and encourages home gardeners to use native plants to create habitats for these critical species. In summer and fall 2018, the Society is installing pollinator gardens at twelve public sites across New England. These pollinator gardens are each accompanied by a free garden installation workshop and a free lecture that train participants to do the same in their own backyards (see locations and dates below). Further resources, including a new plant finder database and the Gardening with Pollinators online course, can be found at [newenglandwild.org](http://newenglandwild.org). Pollinator kits are also available in the Society's shops and online. Join the initiative and become part of the solution to the pollinator crisis. For additional information and to reserve your seat, visit [newenglandwild.org](http://newenglandwild.org).



**Thursday, August 2:** Jericho Center Green, Jericho, VT

**Thursday, September 6:** Roger Williams Park Zoo, Providence, RI

**Saturday, September 8:** Keene State College, Keene, NH

**Program Code:** PNE1000 through PNE1023

**Fee:** Free

**Limit:** 15 for workshops, varies for lectures



## POLLINATOR SYMPOSIUM

Attend a day-long symposium to discuss interactions between native plants and pollinators and learn how to combat the pollinator crisis through panels and workshops led by specialists in the field. The symposium addresses such topics as: researching and tracking different types of native pollinators, creating and growing gardens that support the region's native pollinators, and selecting the most effective pollinator-friendly native plants for particular habitats and ecoregions. With an engaging keynote by Dr. Robert Gegear, creator of The Beecology Project, this symposium offers a fitting culmination to a summer of pollinator programs and a vision for next steps. Register and be part of the solution! Check [newenglandwild.org](http://newenglandwild.org) for the most up-to-date details.

**Sunday, October 28, 2018, 10 a.m.-5 p.m.**

Susan N. McLane Audubon Center, Concord, NH

**Program Code:** SYM1005

**Fee:** \$75 (Member)/\$90 (Nonmember)

**Certificate:** Elective: all certificates

**Cosponsor:** New Hampshire Audubon and New England Field Office, U.S. Fish and Wildlife Service

# online learning

## ONLINE COURSES

Enjoy the Society's rich educational programming wherever you are. Register now for one of our online courses on native plant botany, horticulture, and design.

---

### PLANTS 101: INTRODUCTION TO THE GREEN WORLD

Explore New England's plant life in this online course. Learn what plants are, how they function, and why they are essential to all life on earth. The course introduces many of the region's native and non-native plants. Students complete the course at their own pace.

**Class access begins Friday, September 21, 2018 and continues through Friday, December 21, 2018**

**Program Code:** BOTO101

**Fee:** \$70 (Member)/\$85 (Nonmember)

**Certificate:** Elective: FB/Adv.FB

---

### GARDENING FOR POLLINATORS

This online course teaches how to convert a yard into productive pollinator habitat. Students are introduced to issues associated with pollinator decline and current conservation efforts, then explore a variety of pollinators and the native plants that support their life-cycles. The course also covers basic pollinator garden design and provides step-by-step instructions for selecting plants and installing, and maintaining these habitats. Students complete the course at their own pace.

**Class access begins Friday, October 19, 2018 and continues through Friday, January 18, 2019**

**Program Code:** HORO101

**Fee:** \$70 (Member)/\$85 (Nonmember)

**Certificate:** Elective: HD/Adv.HD

---

---

### PLANTS 102: DEEPER INTO THE GREEN WORLD

Delve deeper into the New England flora in this online course. Learn how plants change as they grow; how they interact with other species; and how geology, soils, land-use history, hydrology, and climate shape the plant communities of the region. Plants 101 is a complement to Plants 102, but is not a prerequisite. Students complete the course at their own pace.

**Class access begins Friday, January 11, 2019 and continues through Friday, April 5, 2019**

**Program Code:** BOTO102

**Fee:** \$70 (Member)/\$85 (Nonmember)

**Certificate:** Elective: FB/Adv.FB

---

### DESIGNING WITH NATIVE PLANTS

This online course teaches the basics of designing with native plants and shows how to incorporate native plants into the garden and landscape. Discover the variety of native plants found throughout New England and learn how to design a visually interesting landscape that also supports biodiversity. Students complete the course at their own pace.

**Class access begins Friday, January 11, 2019 and continues through Friday, April 5, 2019**

**Program Code:** HORO100

**Fee:** \$70 (Member)/\$85 (Nonmember)

**Certificate:** Elective: HD/Adv.HD

---



# online learning

## WEBINARS

Join us for live webinars to learn about plant conservation, gardening, native plants, and more. Watch three live webinars to earn one elective class.

---

### PLANT COMMUNITIES OF CONNECTICUT

There are many different plant communities in CT. In this webinar, which offers a great introduction to the diverse flora of New England, students explore the distinguishing characteristics and the common species found in each.

**Tuesday, September 11, 2018, 6-7 p.m.**

**Program Code:** BOTW302

**Instructor:** Laney Widener, Botanical Coordinator, New England Wild Flower Society

**Fee:** \$10 (Member)/\$13 (Nonmember)

**Certificate:** Elective: FB/Adv.FB

---

### PLANT COMMUNITIES OF VERMONT

There are many different plant communities in VT. In this webinar, which offers a great introduction to the diverse flora of New England, students explore the distinguishing characteristics and the common species found in each.

**Tuesday, October 9, 2018, 6-7 p.m.**

**Program Code:** BOTW504

**Instructor:** Laney Widener, Botanical Coordinator, New England Wild Flower Society

**Fee:** \$10 (Member)/\$13 (Nonmember)

**Certificate:** Elective: FB/Adv.FB





---

## PUTTING THE GARDEN TO BED

Wondering when to cut back perennials, and how long into autumn perennials, trees, and shrubs can be planted or pruned? Want to know about the most wildlife-friendly approach? Anna Fialkoff explains how to transition a garden into winter dormancy while balancing winter and spring preparation, beauty, and wildlife value.

**Thursday, October 11, 2018, 7-8 p.m.**

**Program Code:** HORW343

**Instructor:** Anna Fialkoff, Horticulturist,  
New England Wild Flower Society

**Fee:** \$10 (Member)/\$13 (Nonmember)

**Certificate:** Elective: HD/Adv.HD

---

## EX-SITU CONSERVATION – GLOBAL INITIATIVES AND CONTEXT

Ex-situ conservation is a means of preserving genetic materials outside of a plant's natural habitat. Among the many methods of ex-situ conservation, the Society's regional Seed Bank is a local example of an effort to preserve rare and endangered species. There are also other ways to store seeds. Join Seed Bank Coordinator Michael Piantedosi to discuss the many efforts to preserve given genotypes throughout the world and close to home.

**Tuesday, October 16, 2018, 2-3 p.m.**

**Program Code:** BOTW512

**Instructor:** Michael Piantedosi,  
NEPCoP/Seed Bank Coordinator, New  
England Wild Flower Society

**Fee:** \$10 (Member)/\$13 (Nonmember)

**Certificate:** Elective: FB/Adv.FB



---

## WINTER BRANCHLET IDENTIFICATION

This webinar details the features needed to identify trees, shrubs, and vines during the dormant season, when most have shed their leaves. Using examples from the New England landscape, the presentation focuses on terminology to prepare students for using various guides to winter branchlet identification.

**Thursday, November 1, 2018, 1-2 p.m.**

**Program Code:** BOTW601

**Instructor:** Arthur Haines, Research Botanist,  
New England Wild Flower Society, author of  
*Flora Novae Angliae*

**Fee:** \$10 (Member)/\$13 (Nonmember)

**Certificate:** Elective: FB/Adv.FB

---

## PLANT COMMUNITIES OF MAINE

There are many different plant communities in ME. In this webinar, which offers a great introduction to the diverse flora of New England, students explore the distinguishing characteristics and the common species found in each.

**Tuesday, November 13, 2018, 6-7 p.m.**

**Program Code:** BOTW301

**Instructor:** Laney Widener, Botanical Coordinator, New England Wild Flower Society

**Fee:** \$10 (Member)/\$13 (Nonmember)

**Certificate:** Elective: FB/Adv.FB

---

## PLANT COMMUNITIES OF RHODE ISLAND

There are many different plant communities in RI. In this webinar, which offers a great introduction to the diverse flora of New England, students explore the distinguishing characteristics and the common species found in each.

**Tuesday, December 4, 2018, 6-7 p.m.**

**Program Code:** BOTW503

**Instructor:** Laney Widener, Botanical Coordinator, New England Wild Flower Society

**Fee:** \$10 (Member)/\$13 (Nonmember)

**Certificate:** Elective: FB/Adv.FB



---

## LIFE IN THE CLOUDS: NEW ENGLAND'S ALPINE PLANTS

This webinar takes participants on a survey of some of the region's most extreme and beautiful habitats, New England's high mountain summits. Join Research Botanist Arthur Haines as he addresses a broad survey of plants adapted to these habitats, showing the physical characteristics of the sites and various adaptations that plants use to live at high elevation.

**Friday, December 14, 2018, 1-2 p.m.**

**Program Code:** BOTW514

**Instructor:** Arthur Haines, Research Botanist, New England Wild Flower Society, author of *Flora Novae Angliae*

**Fee:** \$10 (Member)/\$13 (Nonmember)

**Certificate:** Elective: FB/Adv.FB

# online learning

## PLANT CONSERVATION UPDATE: CONNECTICUT

Learn about the Society's most recent work to conserve rare and endangered native plants in CT. This webinar addresses different focal species and the strategies that staff and volunteers are using to protect native plants in the southern-most New England state.

**Tuesday, January 22, 2019, 1-2 p.m.**

**Program Code:** BOTW401

**Instructor:** Laney Widener, Botanical Coordinator, New England Wild Flower Society

**Fee:** \$10 (Member)/\$13 (Nonmember)

**Certificate:** Elective: FB/Adv.FB

## SANCTUARIES OF THE SOCIETY

The New England Wild Flower Society owns nine plant sanctuaries scattered throughout the region. This webinar offers a brief history, description, and explanation of the ecological-botanical significance of these sanctuaries as well as a discussion of threats to their ecological integrity. This session also covers the challenges of managing a plant sanctuary in today's changing world.

**Tuesday, February 26, 2019, 1-2 p.m.**

**Program Code:** BOTW107

**Instructor:** Bud Sechler, Ecological Programs Coordinator, New England Wild Flower Society

**Fee:** \$10 (Member)/\$13 (Nonmember)

**Certificate:** Elective: all certificates



## NATIVE BOTANICAL CYANOTYPE PRINT WORKSHOP

In this hands-on workshop, explore the history and methodology of botanical cyanotype prints and learn how to create them. Cyanotype is an early photographic printing process that uses light-sensitive materials and sunlight to create unique and striking blue prints or “sun prints.” The process lends itself beautifully to the scientific and artistic documentation of botanical specimens.

**Saturday, August 11, 2018, 10 a.m.-2 p.m.**

Nasami Farm, Whately, MA

**Program Code:** ART8013

**Instructor:** Alexis Doshas, Propagator and Facilities Manager at Nasami Farm, New England Wild Flower Society

**Fee:** \$53 (Member)/\$64 (Nonmember)

**Limit:** 8

## SMARTWEEDS AND KNOTWEEDS (POLYGONACEAE)

Through a power point presentation, a close look at herbarium specimens, and a foray into the field, this class investigates the large and complex Polygonaceae family, whose many species in New England range in size from prostrate doorweeds (*Polygonum aviculare*) to the 12-foot giant knotweed (*Fallopia sachalinensis*) and grow in a wide range of habitats. In the field, students look for and identify a number of upland and wetland species in the Fallopi, Persicari, and Polygonum genera.

**Saturday, August 11, 2018, 10 a.m.-4 p.m.**

Garden in the Woods, Framingham, MA

**Program Code:** PDW4402

**Instructor:** Ted Elliman, botanist and author of *Wildflowers of New England*

**Fee:** \$80 (Member)/\$96 (Nonmember)

**Limit:** 16

**Certificate:** PDW: Adv.FB; Elective: all certificates



Prostrate doorweed (*Polygonum aviculare*)

## ADVANCED PLANT INVENTORY TECHNIQUES

This course covers the procedures and techniques for conducting a botanical inventory on conservation land. Following an evening session, during which students review research and sampling methods, they spend a full day in the field inventorying the vascular plants on an ecologically diverse site. On the second evening, they review results, identify plants that were puzzling in the field, and compile a complete list of findings.

**Thursdays, August 16, 23, 6:30 -8:30 p.m.;**  
**Sunday, August 19, 2018, 10 a.m.-3 p.m.**

Garden in the Woods, Framingham, MA, and field sites

**Program Code:** BOT2055

**Instructor:** Ted Elliman, botanist and author of *Wildflowers of New England*

**Fee:** \$160 (Member)/\$200 (Nonmember)

**Limit:** 16

**Certificate:** Core: Adv.FB; Elective: all certificates

## GRASSES OF THE NORTHEAST

This comprehensive survey covers more than 40 common and representative genera of grasses. The first day of this two-day workshop includes a lecture, microscopic examination of specimens, and observation of dried plants; the second day is devoted to field studies.

**Wednesday, August 29, 10 a.m.-4 p.m. and**  
**Wednesday, September 5, 2018, 10 a.m.-2 p.m.**

Garden in the Woods, Framingham, MA and field site

**Program Code:** PDW3518

**Instructor:** Dennis Magee, environmental consultant and author of *Grasses of the Northeast*

**Fee:** \$118 (Member)/\$142 (Nonmember)

**Limit:** 16

**Certificate:** PDW: Adv.FB; Elective: all certificates

**Cosponsor:** Massachusetts Association of Conservation Commissions

## DISCOVERING NATIVE FERNS

New England contains a rich and unusual diversity of ferns. In this class, students discuss their significance and how to identify those most common to the region. A lecture includes slides, laminated specimens, and microscopic details. Afterward, participants explore the Garden's extensive collection of ferns. Bring any ferns for identification.

**Thursday, September 6, 2018, 10 a.m.-1 p.m.**

Garden in the Woods, Framingham, MA

**Program Code:** BOT3410

**Instructor:** Don Lubin, fern enthusiast

**Fee:** \$40 (Member)/\$48 (Nonmember)

**Limit:** 16

**Certificate:** Elective: FB/Adv.FB

**Cosponsor:** Massachusetts Association of Conservation Commissions



Marginal wood fern (*Dryopteris marginalis*)



---

## INTRODUCTION TO AQUATIC PLANTS OF NEW ENGLAND

Aquatic habitats of the Northeast support a high diversity of plants. Learn how to identify local native and invasive aquatic plants through hands-on review of vegetative and floral characteristics. Discover the amazing adaptations plants have made to live in water.

**Thursdays, September 6, 13, 2018, 6-9 p.m.**

Nasami Farm, Whately, MA

**Program Code:** WET1005

**Instructor:** Lori Benoit, wetland scientist and environmental consultant

**Fee:** \$80 (Member)/\$96 (Nonmember)

**Limit:** 12

**Certificate:** Elective: FB

**Cosponsor:** Massachusetts Association of Conservation Commissions

---

## FIELD IDENTIFICATION TECHNIQUES

Gain the skills and confidence needed to identify native plants in the field. Learn how to use field guides and professional keys, observe floral structures, recognize reliable family characteristics, and become familiar with botanical Latin. This course is designed for students who have taken the Society's Wildflowers of New England course or have some previous experience identifying wildflowers.

**Mondays, September 10, 17, 24, 2018, 1-5 p.m.**

Garden in the Woods, Framingham, MA

**Program Code:** BOT2008

**Instructor:** Leslie Duthie, botanist

**Fee:** \$185 (Member)/\$218 (Nonmember)

**Limit:** 16

**Certificate:** Core: FB; Elective: all certificates

**Cosponsor:** Massachusetts Association of Conservation Commissions

---



White water-lily (*Nymphaea odorata*)

---

## PLANT FORM AND FUNCTION

This introduction to botany covers the basics of plant anatomy and physiology and addresses the fundamentals of the plant kingdom through slides and live materials. Microscopic study provides a close look at roots, stems, leaves, and their component tissues. Participants examine flowers, fruits, and seeds and discuss pollination, fertilization, dispersal, and germination, with an emphasis on the relationship between plant form and function.

**Wednesdays, September 19, 26, October 3, 10, 17, 24, 2018, 6:30-9 p.m.**

Garden in the Woods, Framingham, MA

**Program Code:** BOT1000

**Instructor:** Nancy M. Eyster-Smith, Ph.D., botanist

**Fee:** \$231 (Member)/\$270 (Nonmember)

**Limit:** 14

**Certificate:** Core: FB/HD; Elective: all certificates





## ASTERS AND GOLDENRODS

In late summer and early fall, asters and goldenrods come into their own. In this class, the morning discussion includes a presentation of the many asters and goldenrods in the region, focusing on their ecology and identification features. Students also examine specimens from the Society's herbarium and visit a nearby natural area to identify the asters and goldenrods growing in the fields, woodlands, and wetlands. In the field, students look carefully at the differences that characterize these species. Bring a hand lens and a bag lunch.

**Thursday, September 20, 6:30-8:30 pm.,  
Saturday, September 22, 2018, 10 a.m.-3 p.m.**

Garden in the Woods, Framingham, MA, and field sites

**Program Code:** PDW4400

**Instructor:** Ted Elliman, botanist and author of *Wildflowers of New England*

**Fee:** \$86 (Member)/\$104 (Nonmember)

**Limit:** 18

**Certificate:** PDW: Adv.FB; Elective: all certificates

**Cosponsor:** Massachusetts Association of Conservation Commissions

## FALL WILDFLOWERS, FRUIT, AND FOLIAGE

Fall is a time of intense activity for plants. Asters and goldenrods provide a last burst of color and insect pollinators abound. Learn to identify seasonal wildflowers and spring-flowering plants in fruit. Through classroom instruction and a walk in the Garden, participants learn the science behind plants' preparation for winter. Bring a hand lens and Wildflowers of New England.

**Saturday, September 29, 2018, 10 a.m.-2 p.m.**

Garden in the Woods, Framingham, MA

**Program Code:** BOT3018

**Instructor:** Neela de Zoysa, botanist

**Fee:** \$53 (Member)/\$64 (Nonmember)

**Limit:** 16

**Certificate:** Elective: FB

## RARE PLANT SEED COLLECTION

This class studies the sustainable process of seed collection from a rare-plant population, as regularly conducted by members of the New England Plant Conservation Program (NEPCoP) and Plant Conservation Volunteers (PCV) Program. The session begins with analysis of the protocols for seed collection of New England's most imperiled species, followed by a visit to Callahan State Park for a mock field exercise. Apply for the PCV Program after this class to sharpen your skills and use them to protect New England's native plants!

**Sunday, September 30, 2018, 10 a.m. -2 p.m.**

Garden in the Woods, Framingham, MA

**Program Code:** BOT3101

**Instructor:** Michael Piantedosi, NEPCoP/Seed Bank Coordinator, New England Wild Flower Society

**Fee:** \$53 (Member)/\$64 (Nonmember)

**Limit:** 8

**Certificate:** Elective: FB/Adv.FB

## SEED AND FRUIT MORPHOLOGY

Join the Society's Seed Bank Coordinator, Michael Piantedosi, to explore the variety of plant reproduction forms in the New England flora. Participants examine the wide array of fruiting morphologies in various plant families and gain a comprehensive understanding of the evolutionary advantages of fruit and seed physiology for distribution, germination, and perpetuation of species.

**Thursday, October 4, 2018, 6-9 p.m.**

Garden in the Woods, Framingham, MA

**Program Code:** BOT1024

**Instructor:** Michael Piantedosi, NEPCoP/Seed Bank Coordinator, New England Wild Flower Society

**Fee:** \$40 (Member)/\$48 (Nonmember)

**Limit:** 15

**Certificate:** Elective: FB/HD

## INVASIVE PLANTS: IDENTIFICATION, DOCUMENTATION, AND CONTROL

What's all the fuss? Botanists, ecologists, horticulturists, and conservation professionals are united in their concern about invasive plants, but there is still some confusion about what they are and what to do about them. In this class, participants study the basic ecological problems created by these aggressive species and the complicated issues involved in controlling them. They learn to identify many of New England's invasive species through images, specimens, and a local field visit. Bring a bag lunch and a hand lens; wear waterproof shoes and dress appropriately for the weather.

**Thursday October 11, 6:30-8:30 pm, and Saturday, October 13, 2018, 10 a.m.-4 p.m.**

Garden in the Woods, Framingham, MA, and field sites

**Program Code:** BOT5130

**Instructor:** Ted Elliman, botanist and author of *Wildflowers of New England*

**Fee:** \$124 (Member)/\$145 (Nonmember)

**Limit:** 16

**Certificate:** Core: Adv.FB/Adv.HD; Elective: all certificates

**Cosponsor:** Massachusetts Association of Conservation Commissions



Red baneberry (*Actaea rubra*)



Oriental bittersweet (*Celastrus orbiculatus*)

---

## AUTUMN BOTANICAL ILLUSTRATION

Make flower representations come to life by sketching them en plein air and learning how to capture their “habits.” This drawing intensive starts with loose sketches, after which participants bring specimens back to the classroom to create botanical studies, showing stages of growth, reproductive parts, and external details.

**Saturday, October 20, 2018, 10 a.m.-4 p.m.**

Garden in the Woods, Framingham, MA

**Program Code:** ART1070

**Instructor:** Dorie Petrochko, president, Connecticut Natural Science Illustrators

**Fee:** \$80 (Member)/\$96 (Nonmember)

**Limit:** 10

---

## TRACING CONSERVATION HISTORY: BACK BAY

Who and what inspired current practices and perspectives in plant protection? This walking tour leads participants on a journey of the conservation movement at the turn of the twentieth century. Discover historic local efforts and their impact on the national conversation, right at the Society’s birthplace. Wear walking shoes and dress for the weather.

**Saturday, October 20, 2018, 1:30-3 p.m.**

Back Bay, Boston, MA

**Program Code:** BOT5207

**Instructor:** Courtney Allen, landscape historian and Director of Public Programs, New England Wild Flower Society

**Fee:** \$24 (Member)/\$28 (Nonmember)

**Limit:** 12

**Certificate:** Elective: FB

---

## FRAMEWORK TREES OF NEW ENGLAND

Forests are a dominant feature of the New England landscape. This course covers the history, changes in composition, and ecology of the region’s forest from the Ice Age through European settlement. Learn to identify native trees, their habitats, and their communities. Explore the impact of past natural and human disturbances on the landscape and learn how current forestry practices shape forest communities.

**Thursday, October 25, 2018, 10 a.m.-5 p.m.,**

**Saturday, October 27, 2018, 10 a.m.-5 p.m.**

Nasami Farm, Whately, MA, and field sites

**Program Code:** BOT3200

**Instructor:** Jonathan “Yoni” Glogower, forester, Community College of Vermont

**Fee:** \$216 (Member)/\$254 (Nonmember)

**Limit:** 16

**Certificate:** Core: FB; Elective: all certificates

**Cosponsor:** Massachusetts Association of Conservation Commissions



Striped maple (*Acer pensylvanicum*)

## NEW ENGLAND PLANT DIVERSITY

Keeping up with changes in plant names can be challenging, but these changes reflect expanding understanding of the plant kingdom based on genetics, a closer look at plant form, and new ways of analyzing relationships. Learn how to make sense of the new plant universe from one of the best botanists in the field, Arthur Haines. Students should begin with Session 1, but Sessions 2–5 may be taken in any order. Bring a copy of *Plant Systematics: A Phylogenetic Approach* to class.

Garden in the Woods, Framingham, MA

**Instructor:** Arthur Haines, Research Botanist, New England Wild Flower Society, author of *Flora Novae Angliae*

**Fee:** \$46 (Member)/\$54 (Nonmember) per session

**Limit:** 20

**Certificate:** Core: Adv.FB; Elective: all certificates

**Cosponsor:** Massachusetts Association of Conservation Commissions

## SESSION 1

This class addresses the vocabulary needed to understand plant identification and classification based on vegetative and reproductive structures. An introduction to plant nomenclature, phylogeny, and scientific names is also provided.

**Sunday, October 21, 2018, 1-4 p.m.**

**Program Code:** BOT2205

## SESSION 2

In this class, students examine tracheophyte families, starting with free-sporing plants (e.g., ferns) and ending with three major groups of seed plants: nonflowering seed plants (i.e., conifers); magnoliids (i.e., primitive dicots); and monocots.

**Sunday, November 18, 2018, 1-4 p.m.**

**Program Code:** BOT2230

## SESSION 3

This class focuses on the tracheophyte families referred to as the tricolpates (i.e., most dicot plants). Discussion includes primitive tricolpates (e.g., Ranunculaceae, Papaveraceae, Maranthaceae) and eurosids (e.g., Rosaceae, Betulaceae, Brassicaceae).

**Sunday, February 10, 2019, 1-4 p.m.**

**Program Code:** BOT2236

*Sessions 4 and 5 coming Spring/Summer 2019*



Northern spicebush (*Lindera benzoin*)

---

## LICHEN DIVERSITY

This class begins with a morning in which participants compare lichen collections to study the features that distinguish species. An afternoon visit to a local site offers an opportunity to study the diversity of lichens commonly found growing on rock walls and the factors that influence lichen colonization and growth.

**Saturday, October 27, 2018, 9:30 a.m.-2:30 p.m.**

Garden in the Woods, Framingham, MA, and Sudbury Center cemeteries

**Program Code:** BOT3629

**Instructor:** Elizabeth Kneiper, lichenologist

**Fee:** \$66 (Member)/\$80 (Nonmember)

**Limit:** 15

**Certificate:** Elective: FB/Adv.FB

---

## RARE PLANTS OF NEW ENGLAND: THEIR HABITATS AND CONSERVATION

This lecture addresses the rarity of the region's plants and their habitats, and demonstrates various methods for conserving them. Learn about the amazing diversity of species and the efforts of the Society and others to conserve rare plants.

**Saturday, November 17, 2018, 10:30 a.m.-1:30 p.m.**

Garden in the Woods, Framingham, MA

**Program Code:** LEC1026

**Instructor:** Bill Brumback, Director of Conservation, New England Wild Flower Society

**Fee:** \$40 (Member)/\$48 (Nonmember)

**Limit:** 75

**Certificate:** Elective: FB/Adv.FB

---

---

## CONSERVATION BIOLOGY

This introduction to conservation biology and biodiversity covers the factors that make a species vulnerable to extinction and the strategies and tools that can be used to protect plants and ecosystems. The course explores the interdisciplinary nature of conservation biology through readings, group exercises, and video clips. Participants receive a bibliography of resources for further study. Bring a bag lunch.

**Thursdays, January 10, 17, 24, 2019, 10 a.m.-3:30 p.m.**

Garden in the Woods, Framingham, MA

**Program Code:** BOT5100

**Instructor:** Nancy M. Eyster-Smith, Ph.D., botanist

**Fee:** \$254 (Member)/\$300 (Nonmember)

**Limit:** 16

**Certificate:** Core: Adv.FB; Elective: FB

---



American globe-flower (*Trollius laxus*)



## WETLAND SHRUBS IN WINTER

This class uses a combination of branching patterns, bud and bark characteristics, habitat, and further characteristics for the winter identification of wetland shrubs. With a pond, a stream, and a bog, Garden in the Woods provides an excellent field site. The program begins with a short session indoors, then students move outside to take a close look at 15-20 shrubs. Bring lunch and a hand lens if able.

**Saturday, January 19, 2019, 10 a.m.-2 p.m.**

Garden in the Woods, Framingham, MA

**Program Code:** WET3020

**Instructor:** Roland "Boot" Boutwell, naturalist

**Fee:** \$53 (Member)/\$64 (Nonmember)

**Limit:** 12

**Certificate:** Elective: FB/Adv.FB

**Cosponsor:** Massachusetts Association of Conservation Commissions

## FRUITS AND SEEDS REVEALED

Plants need their seeds to move around so they can propagate the next generation. In this session, participants learn how plants have adapted a variety of ways to disperse their seeds. After a lecture on seed and fruit structures, the class studies examples of some of the adaptations using hand lenses and microscopes.

**Sunday, January 20, 2019, 10 a.m.-12 p.m.**

Nasami Farm, Whately, MA

**Program Code:** BOT1019

**Instructor:** George LoCascio, naturalist

**Fee:** \$26 (Member)/\$32 (Nonmember)

**Limit:** 20

**Certificate:** Elective: FB



Clammy azalea (*Rhododendron viscosum*)



---

## WINTER BOTANY

Investigate the taxonomic characteristics of deciduous, evergreen, and some herbaceous plants in winter. Students learn to use a dichotomous key and then identify a large inventory of twig and plant specimens before heading outdoors to practice these skills in the Garden's living collection. Bring a bag lunch, a hand lens, and a copy of *Fruit Key and Twig Key to Trees and Shrubs* by William M. Harlow. Take home plant specimens.

**Thursday, January 31, 2019, 10 a.m.-4 p.m.**

Garden in the Woods, Framingham, MA

**Program Code:** BOT3317

**Instructor:** William E. Kuriger, botanist

**Fee:** \$80 (Member)/\$96 (Nonmember)

**Limit:** 30

**Certificate:** Elective: FB/Adv.FB

**Cosponsor:** Massachusetts Association of Conservation Commissions

---



---

## INTRODUCTION TO PLANT GENETICS

This course begins with a basic overview of genetic theory, then jumps into the plant world. Plants demonstrate fascinating genetic attributes when viewed under a microscope. Come learn about the secret world of plants from mutations to transposons, hybridization, and polyploidy. No experience in genetics necessary!

**Thursdays, January 31, February 7, 21, 2019, 6-8 p.m.**

Garden in the Woods, Framingham, MA

**Program Code:** BOT1401

**Instructor:** Laney Widener, Botanical Coordinator, New England Wild Flower Society

**Fee:** \$80 (Member)/\$96 (Nonmember)

**Limit:** 15

**Certificate:** Elective: FB/Adv.FB

---

---

## CLIMATE CHANGE AND THE PLANTS OF NEW ENGLAND

Climate change is already altering the behavior of plants in New England. Learn how climate change is expected to affect the habitats and plants of the region during this century, with special emphasis on rare species.

**Tuesday, February 12, 2019, 10-11 a.m.**

Garden in the Woods, Framingham, MA

**Program Code:** LEC1027

**Instructor:** Bill Brumback, Director of Conservation, New England Wild Flower Society

**Fee:** \$20 (Member)/\$24 (Nonmember)

**Limit:** 75

**Certificate:** Elective: FB/Adv.FB

---



---

## FLORA AND PHYSICAL FEATURES OF THE ALPINE ZONE

This program focuses on the climatic and physical characteristics of New England's alpine areas on the highest mountains of ME, NH, and VT. Botanist Ted Elliman details the unique, highly specialized, and beautiful flora that characterize the above-timberline community.

**Friday, February 22, 2019, 10 a.m.-12 p.m.**

Garden in the Woods, Framingham, MA

**Program Code:** BOT4021

**Instructor:** Ted Elliman, botanist and author of *Wildflowers of New England*

**Fee:** \$26 (Member)/\$32 (Nonmember)

**Limit:** 20

**Certificate:** Elective: Adv.FB

---

## RARE PLANT FAMILIES

Where have all the flowers gone? Well not all, but many, are in decline, and some more than others. This class increases participants' understanding of the most threatened and imperiled New England plant families. From the orchids to the moonworts, this session assesses status of several plant families of conservation concern. Included is a discussion of actions the Society and conservationists in the region are conducting to protect the taxa most in need.

**Saturday, February 23, 2019, 10:30 a.m.-1:30 p.m.**

Garden in the Woods, Framingham, MA

**Program Code:** BOT2270

**Instructor:** Michael Piantedosi, NEPCoP/Seed Bank Coordinator, New England Wild Flower Society

**Fee:** \$40 (Member)/\$48 (Nonmember)

**Limit:** 20

**Certificate:** Elective: Adv.FB

---

## BLOOMING BUTTERCUPS

Through a power point presentation and herbarium specimens, this class investigates many of the native and non-native buttercup species that bloom in spring and early summer. The class focuses on the characteristics that distinguish each species of this large and sometimes confusing group and discusses their typical habitats.

**Saturday, March 23, 2019, 10 a.m.-1 p.m.**

Garden in the Woods, Framingham, MA

**Program Code:** BOT3019

**Instructor:** Ted Elliman, botanist and author of *Wildflowers of New England*

**Fee:** \$40 (Member)/\$48 (Nonmember)

**Limit:** 20

**Certificate:** Elective: FB



Greater yellow water crowfoot (*Ranunculus flabellaris*)



## IN THE FIELD

Nothing beats the experience of seeing native plants in their natural environments. These expert-led excursions provide unique access to varied habitats and unusual native plants.

### FIELD TRIP DIFFICULTY RATING

#### Easy

The hike covers mostly level ground and possibly a few gentle hills; walking surfaces are relatively smooth. Easy hikes are generally suitable for anyone who enjoys walking.

#### Easy/moderate

The hike is not flat, but the elevation gain is less than 500 feet per mile. Hikers should be prepared for some gentle uphill walking and possibly a few short, steeper sections.

#### Moderate

The hike ascends at a steady incline, usually 500-800 feet per mile, which would be unsuitable for someone not accustomed to hiking.

#### Moderate/difficult

The hike is challenging, with an average elevation gain of 500-800 feet per mile and some steeper sections or rougher walking conditions. This designation also describes hikes that are quite steep but relatively short.

#### Difficult

The hike features steep inclines and rough footing or rock scrambles. The gain in elevation averages more than 800 feet per mile and frequently reaches or exceeds 1,000 feet or more per mile.

### SPECIAL HABITATS AND PLANTS OF ACADIA NATIONAL PARK

This field study explores various habitats in Acadia National Park and the plants that grow there. Participants observe rare species and unusual natural communities, and learn about the Society's ongoing habitat restoration work in the park. Pack a lunch.

**Habitat:** maritime spruce-fir, coastal headland, salt marsh, pitch pine-broom crowberry woodland

**Known for:** coastal communities and rare arctic plant species that reach their southern range limit in this area

**Difficulty:** moderate, over rocky shorelines and uneven ground

**Saturday, August 4, 2018, 10 a.m.-3 p.m.**

Acadia National Park, Bar Harbor, ME

**Program Code:** FDT8046

**Instructor:** Jill Weber, botanist

**Fee:** \$47 (Member)/\$58 (Nonmember)

**Limit:** 10

**Certificate:** Field: FB/Adv.FB



Crowberry (*Empetrum nigrum*)



---

## **BOTANY OF THE NEW HAMPSHIRE COASTLINE**

Great Bay National Wildlife Refuge is located along the eastern shore of New Hampshire's Great Bay in the town of Newington. The refuge protects more than 1,000 acres along the seacoast for migratory birds and other wildlife. One of the longest stretches of undeveloped shoreline along the bay, it consists of mud flats, salt- and freshwater marshes, swamps, ponds, streams, woodlands, and fields. Join Seed Bank Coordinator Michael Piantedosi in exploring this diverse refuge and learn a bit about its dynamic flora.

**Habitat:** salt- and freshwater marshes, swamps, ponds, streams, woodlands, and fields

**Known for:** dynamic range of habitat, coastal refuge, migratory birds

**Difficulty:** moderate

**Saturday, August 18, 2018, 10 a.m.-1 p.m.**

Great Bay National Wildlife Refuge,  
Newington, NH

**Program Code:** FDT8045

**Instructor:** Michael Piantedosi, NEPCoP/Seed Bank Coordinator, New England Wild Flower Society

**Fee:** \$28 (Member)/\$35 (Nonmember)

**Limit:** 12

**Certificate:** Field: FB/Adv.FB



---

## **BOTANY IN THE SALT MARSH**

Barnstable Great Marsh is an integral part of the ecologically significant 3,800-acre Sandy Neck salt marsh and barrier beach system. Join Seed Bank Coordinator Michael Piantedosi to explore this critical coastal ecosystem and learn about its resident flora.

**Habitat:** salt marsh, coastal

**Known for:** 3,800-acre salt marsh ecosystem and Sandy Neck

**Difficulty:** easy/moderate

**Sunday, August 26, 2018, 10 a.m.-1 p.m.**

Barnstable Great Marsh Wildlife Sanctuary,  
Barnstable, MA

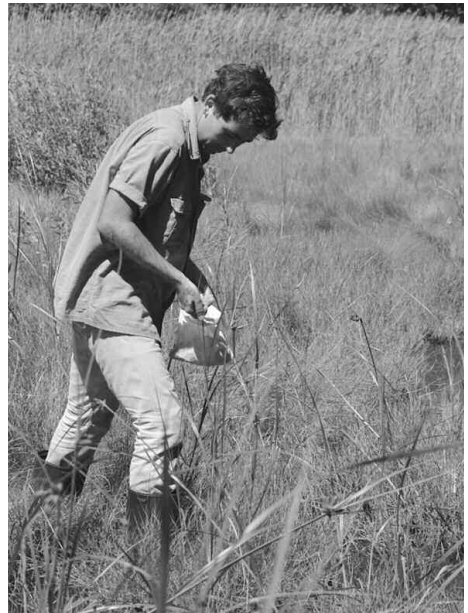
**Program Code:** FDT8041

**Instructor:** Michael Piantedosi, NEPCoP/Seed Bank Coordinator, New England Wild Flower Society

**Fee:** \$28 (Member)/\$35 (Nonmember)

**Limit:** 15

**Certificate:** Field: FB/Adv.FB







## FLORA OF NEW ENGLAND COASTAL SAND DUNES

Parker River National Wildlife Refuge is home to extensive sandy beach and dune habitat, where many shore birds and wildlife flourish amid the varied flora of the area. Join Seed Bank Coordinator Michael Piantedosi to discuss the plants of the salt marsh and the sand dune habitats that make Parker River so unique.

**Habitat:** sandy beach/dune, salt marsh, coastal

**Known for:** more than 200 acres of sand dunes, Plum Island, and piping plover habitat

**Difficulty:** moderate

**Saturday, September 8, 2018, 10 a.m.-1 p.m.**

Parker River National Wildlife Refuge,  
Newburyport, MA

**Program Code:** FDT8039

**Instructor:** Michael Piantedosi, NEPCoP/Seed Bank Coordinator, New England Wild Flower Society

**Fee:** \$28 (Member)/\$35 (Nonmember)

**Limit:** 6

**Certificate:** Field: FB/Adv.FB

## BLUE HILLS FERNS

This field study explores a particularly biodiverse area, inhabited by more than a third of the fern species native to Massachusetts. In addition to ferns, participants encounter and learn about several club-mosses, horse-tails, and hybrids.

**Habitat:** forests

**Known for:** fern diversity

**Difficulty:** easy/moderate

**Saturday, September 15, 2018, 12-4 p.m.**

Milton, MA, near Blue Hills Reservation

**Program Code:** FDT1032

**Instructor:** Don Lubin, fern enthusiast

**Fee:** \$38 (Member)/\$46 (Nonmember)

**Limit:** 12

**Certificate:** Field: FB/Adv.FB

**Cosponsor:** Massachusetts Association of Conservation Commissions



Common clubmoss (*Lycopodium clavatum*)



Black huckleberry (*Gaylussacia baccata*) by Marilee Lovitt

---

## WETLANDS OF EAST LEVERETT MEADOW

Following muddy and mossy trails, this field study explores different wetlands and their plant compositions. Naturalist George Lo-Cascio highlights local plants, wetlands ecology, and the importance of conserving the plants. Aquatic invertebrates make a special cameo appearance.

**Habitat:** wetlands, hemlock stand

**Known for:** mosses, pollinators, shrubs

**Difficulty:** easy/moderate

**Saturday, September 15, 2018, 12-2 p.m.**

East Leverett Meadow, Leverett, MA

**Program Code:** FDT8055

**Instructor:** George LoCascio, naturalist

**Fee:** \$21 (Member)/\$25 (Nonmember)

**Limit:** 16

**Certificate:** Field: FB/Adv.FB

**Cosponsor:** Massachusetts Association of Conservation Commissions

---

## ROCKY SUMMITS, SPRUCE FORESTS, AND THE HABITATS IN BETWEEN

Hike through Mount Watatic Reservation's open summits, the adjoining spruce and northern hardwoods forests, and the several different transition communities between them. The views of the multiple community types should provide near-peak fall color, great for differentiating species and for pure enjoyment.

**Habitat:** northern forests including spruce, fir, northern hardwoods, and rocky summits

**Known for:** red spruce forest, spruce and northern hardwood forests, acid rocky summits, open oak forest, ridgetop heathland, blueberries, and huckleberry barrens

**Difficulty:** moderate/difficult; on a steep hillside, but little scrambling required

**Sunday, September 16, 2018, 10 a.m.-2 p.m.**

Watatic Mountain Reservation and Sanctuary, Ashburnham and Ashby, MA

**Program Code:** FDT8049

**Instructor:** Patricia Swain Rice, natural community ecologist

**Fee:** \$38 (Member)/\$46 (Nonmember)

**Limit:** 10

**Certificate:** Field: FB





---

## PONEMAH BOG IN AUTUMN

In this field study, participants learn to identify wetland shrubs by utilizing a unique three-acre kettle-hole pond encircled by a floating mass of sphagnum moss. The pond and bog are easily accessible by a narrow boardwalk with three viewing platforms. Bring lunch and a hand lens if able.

**Habitat:** fen with a floating, marshy peat mat

**Known for:** small cranberries, rhodora, pitcher plants, sundews

**Difficulty:** easy

**Sunday, September 23, 2018, 10 a.m.-2 p.m.**

Ponemah Bog, Amherst, NH

**Program Code:** FDT1092

**Instructor:** Roland "Boot" Boutwell, naturalist

**Fee:** \$38 (Member)/\$46 (Nonmember)

**Limit:** 12

**Certificate:** Field: FB/Adv.FB

**Sponsor:** Massachusetts Association of Conservation Commissions

---

## COFFIN WILD FLOWER RESERVATION

This sanctuary is one of nine owned by the Society. Hilly woods, a brook, and 1,256 feet of sandy shore and tidal marsh make up the 177-acre area, which borders lovely Merrymeeting Bay, well-known for its diversity of waterfowl. Hike the woodland trails along the east side of the bay to a large, old stand of bigtooth aspen and fascinating freshwater estuary plants that are limited to this rare habitat type. Bring binoculars if able, and be prepared to get wet!

**Habitat:** estuary and mixed hardwood-conifer forest

**Known for:** freshwater estuary plants

**Difficulty:** easy/moderate



Round-leaved sundew (*Drosera rotundifolia*) by Glen Mittelhauser

**Saturday, September 29, 2018, 10 a.m.-12 p.m.**

Coffin Wild Flower Reservation, Woolwich, ME

**Program Code:** FDT8029

**Instructor:** Heather McCargo, executive director, Wild Seed Project

**Fee:** \$21 (Member)/\$25 (Nonmember)

**Limit:** 16

**Certificate:** Field: FB/Adv.FB

**Cosponsor:** Maine Audubon

---

## PACK MONADNOCK MOUNTAIN

Pack Monadnock Mountain, the highest peak in the Wapack Range, is home to northern hardwood forests of spruce, pine, and juniper. Hike with an instructor to learn about the forest and to observe the spectacular fall foliage from the scenic summit.

**Habitat:** forests

**Known for:** northern hardwoods, juniper forests, some alpine features

**Difficulty:** moderate

**Saturday, October 6, 2018, 11 a.m.-2 p.m.**

Miller State Park, Peterborough, NH

**Program Code:** FDT8052

**Instructor:** Neela de Zoysa, botanist

**Fee:** \$28 (Member)/\$35 (Nonmember)

**Limit:** 15

**Certificate:** Field: FB/Adv.FB



---

## AN AUTUMN WALK THROUGH MEADOW AND FOREST

Diverse habitats mean diverse plants. This field study begins at the last working farm in Winchester, NH, and explores meadows and meadow edges, ponds and pond edges, an upland forest, and the highest point in Lexington to encounter pitch pine, scrub oak, and bearberry. The walk focuses on plant identification and natural history. Bring lunch and a hand lens if able.

**Habitat:** meadow, pond edge, upland forest

**Known for:** extensive plant variety

**Difficulty:** easy/moderate

**Thursday, October 11, 2018, 10 a.m.-2 p.m.**

Wright-Locke Farm, Winchester, MA

**Program Code:** FDT8051

**Instructor:** Roland "Boot" Boutwell, naturalist

**Fee:** \$38 (Member)/\$46 (Nonmember)

**Limit:** 16

**Certificate:** Field: FB/Adv.FB

**Sponsor:** Massachusetts Association of Conservation Commissions

---

## "THE DESERT" MEMORIAL FOREST RESERVATION

This 615 -acre area is known as The Desert because of its well-drained sandy soils, originally deposited by glacial activity. The soils support an unusual patch of pitch pine and scrub oak in the midst of forest, wetlands, and waterways. Come observe the special features of this habitat and the abundance of food for wildlife, in contrast with the surrounding forests and wetlands.

**Habitat:** forests and wetlands

**Known for:** pitch pine/scrub oak

**Difficulty:** easy

**Friday, October 12, 2018, 10 a.m.-1 p.m.**

Desert Natural Area, Memorial Forest, Sudbury, MA

**Program Code:** FDT8053

**Instructor:** Neela de Zoysa, botanist

**Fee:** \$28 (Member)/\$35 (Nonmember)

**Limit:** 20

**Certificate:** Field: FB/Adv.FB



Pitch pine (*Pinus rigida*)



---

## BOTANY OF THE CONNECTICUT COAST

Explore the special coastal habitats of the 900-acre Hammonasset Beach State Park and Natural Area Preserve to learn the flora and ecology of tidal marsh, dune, and near-shore upland habitats. Participants also visit a tidal marsh restoration site within the park.

**Habitat:** coastal beach/dune, tidal marsh, estuary

**Known for:** more than 600 acres of salt and brackish tidal marshes

**Difficulty:** easy/moderate

---

**Sunday, October 21, 2018, 1-4 p.m.**

Hammonasset Beach State Park, Madison, CT

**Program Code:** FDT8050

**Instructor:** Lori Benoit, wetland scientist and environmental consultant

**Fee:** \$28 (Member)/\$35 (Nonmember)

**Limit:** 10

**Certificate:** Field: FB/Adv.FB

---

## NAKED SHRUBS

No leaves? No Problem! Use a combination of habitat, persistent fruits, galls, marcescent leaves, and further characteristics to identify shrubs in winter. In addition to identification, the instructor discusses the habitat's natural history. Appropriate as an introduction or as a review for those who have taken the core course in Native New England Shrubs and/or Shrubs in Winter. Bring lunch and a hand lens if able.

**Habitat:** meadow edge, upland forest, pond edge, streams, and wetlands

**Known for:** wide variety of shrubs including several wetland species such as winterberry, leatherleaf, and buttonbush

**Difficulty:** easy

---

**Saturday, November 10, 2018, 10 a.m.-2 p.m.**

Grassy Pond Conservation Land, Acton, MA

**Program Code:** FDT1100

**Instructor:** Roland "Boot" Boutwell, naturalist

**Fee:** \$38 (Member)/\$46 (Nonmember)

**Limit:** 16

**Certificate:** Field: FB/Adv.FB

**Sponsor:** Massachusetts Association of Conservation Commissions

---

## WEEDS AND WILDFLOWERS IN WINTER

This class focuses on the identification of herbaceous plants in winter—both native and naturalized species of wildflowers and grasses. Students look closely at the distinctive winter characteristics of these species that allow them to be identified well past their flowering and fruiting period.

**Habitat:** meadows and woodlands

**Known for:** great habitat and floristic diversity

**Difficulty:** easy

---

**Saturday, December 1, 2018, 11 a.m.-2 p.m.**

Barber Town Reservation, Sherborn, MA

**Program Code:** FDT8042

**Instructor:** Ted Elliman, botanist and author of *Wildflowers of New England*

**Fee:** \$28 (Member)/\$35 (Nonmember)

**Limit:** 16

**Certificate:** Field: FB/Adv.FB





---

## NATIVE PLANTS FOR PROFESSIONALS

Join Dan Jaffe to learn about the best native plant materials available today for use in the design and landscape trades. Covering everything from plants for tough spots to specialty plants for specific habitats, this class adds a host of less-familiar native species to participants' plant palettes.

**Wednesdays, August 8, 15, 2018, 10 a.m.-3 p.m.**

Garden in the Woods, Framingham, MA

**Program Code:** HOR1200

**Instructor:** Dan Jaffe, Propagator and Stock Bed Grower, New England Wild Flower Society

**Fee:** \$162 (Member)/\$190 (Nonmember)

**Limit:** 30

**Certificate:** Core: Adv.HD; Elective: HD

**Cosponsor:** Ecological Landscape Alliance and Boston Society of Landscape Architects

---

## NATIVE PLANTS FOR NEW ENGLAND GARDENS - BOOK TALK

*Native Plants for New England Gardens* features beautiful color photographs and practical information on more than 100 great native perennials, trees, shrubs, ferns, grasses, and vines. Join Dan Jaffe, coauthor, as he explains how to create lovely, low-maintenance gardens that support biodiversity and thrive in New England. This in-depth discussion covers everything from plants to use instead of mulch to tough plants for urban gardens.

**Saturday, August 18, 2018, 10:30 a.m.-12 p.m.**

Cambridge Public Library, Cambridge, MA

**Program Code:** LEC8013

**Instructor:** Dan Jaffe, Propagator and Stock Bed Grower, New England Wild Flower Society

**Fee:** FREE

**Cosponsor:** Cambridge Conservation Commission



---

## SEED SAVING

Seed saving brings tremendous benefits to the willing gardener. Learn how seeds develop, stay dormant, and germinate. This hands-on workshop covers harvesting, cleaning, and storing a wide spectrum of native seeds. Spend time in the field observing and collecting seeds, then practice cleaning. Participants take home the seeds they harvest. Bring a lunch and dress appropriately for the field.

**Sunday, August 26, 2018, 10 a.m.- 3 p.m.**

Nasami Farm, Whately, MA

**Program Code:** HOR3205

**Instructor:** Kate Stafford, horticulturist

**Fee:** \$66 (Member)/\$80 (Nonmember)

**Limit:** 15

**Certificate:** Elective: HD/Adv.HD

---

## NATIVE WOODY PLANT MATERIALS

Explore the huge variety of native trees, shrubs, and woody vines. Learn which species grow well in shade, which support

local wildlife, and how to stagger plantings for continual bloom, fruit production, and fall color. The class discusses growth characteristics, cultural requirements, and best horticultural uses. It includes lectures and walks in the Garden as well as a field trip to The Arnold Arboretum. Bring a bag lunch.

**Tuesday, August 28, 2018, 10 a.m.-2:30 p.m.;**

**Tuesday, September 4, 2018, 11 a.m.- 1 p.m.;**

**Tuesday, September 11, 2018, 10 a.m.-2:30 p.m.**

Garden in the Woods, Framingham, MA, and the Arnold Arboretum, Boston, MA

**Program Code:** HOR1100

**Instructor:** Dan Jaffe, Propagator and Stock Bed Grower, New England Wild Flower Society

**Fee:** \$170 (Member)/\$200 (Nonmember)

**Limit:** 24

**Certificate:** Core: HD; Elective: Adv.HD

**Cosponsor:** The Arnold Arboretum of Harvard University and Ecological Landscape Alliance

---

## AN ECOLOGICAL APPROACH TO THE NURSERY AND GREENHOUSE

Nursery and greenhouse plant production can maximize ecological processes and practices. This technical yet informal workshop explores how growers can create a sustainable, safe, and successful operation by mimicking and building on natural systems.

**Saturday, September 8, 2018, 10 a.m.-1:30 p.m.**

Nasami Farm, Whately, MA

**Program Code:** HOR4082

**Instructor:** Alexis Doshas, Propagator and Facilities Coordinator, Nasami Farm, New England Wild Flower Society

**Fee:** \$46 (Member)/\$56 (Nonmember)

**Limit:** 15

**Certificate:** Elective: HD/Adv.HD

**Cosponsor:** Ecological Landscape Alliance



---

## GROWING POLLINATOR-FRIENDLY PLANTS FROM SEED

Learn how to grow the top New England plants for pollinators from seed. The fates of native plants and pollinators are intricately interwoven; both are essential to the environment. Growing from seed is an affordable solution for creating pollinator habitat in a home gardener's yard. This class covers all information needed to raise these pollinator powerhouses.

**Sunday, October 14, 2018, 10 a.m.-1 p.m.**

Nasami Farm, Whately, MA

**Program Code:** HOR8012

**Instructor:** Kate Stafford, horticulturalist

**Fee:** \$40 (Member)/\$48 (Nonmember)

**Limit:** 15

**Certificate:** Elective: HD/Adv.HD

---

## PHOTOGRAPHY FOR GARDENERS

Good photography is not about fancy equipment or post-image processing; it is about capturing a subject and inspiring viewers with the final image. Join Dan Jaffe for a discussion of composition, lighting, angles and other aspects of photography. Emphasis will be on the gestalt of photography rather than the technical details. Bring a camera and good walking shoes.

**Sunday, October 14, 2018, 2-4 p.m.**

Garden in the Woods, Framingham, MA

**Program Code:** ART6068

**Instructor:** Dan Jaffe, Propagator and Stock Bed Grower, New England Wild Flower Society

**Fee:** \$26 (Member)/\$32 (Nonmember)

**Limit:** 15

---

## SUSTAINABLE SITE DESIGN

This one-day intensive seminar explores the fundamentals of integrating buildings within landscapes and reducing maintenance needs through landscape design. Participants investigate sustainable design strategies that address the ecological, water, energy, and food systems. Topics include design principles and process, native plant community restoration and maintenance. Participants complete a short design assignment.

**Thursday, October 18, 2018, 9 a.m.-5 p.m.**

Garden in the Woods, Framingham, MA

**Program Code:** HOR8019

**Instructor:** Tom Benjamin, registered landscape architect

**Fee:** \$106 (Member)/\$128 (Nonmember)

**Limit:** 30

**Certificate:** Elective: HD/Adv.HD

**Cosponsor:** Ecological Landscape Alliance and Boston Society of Landscape Architects



Male wood fern (*Dryopteris filix-mas*)



---

## DESIGNING A GARDEN FOR ALL SEASONS: AUTUMN EDITION

How can a garden both captivate people and provide for wildlife year-round? Anna Fialkoff discusses garden designs that focus on structure and seasonal themes to carry a garden through the year. Afterward, participants walk through Garden in the Woods to see how the horticulture team tackles the autumn season at the Garden.

**Tuesday, October 23, 2018, 1-3 p.m.**

Garden in the Woods, Framingham, MA

**Program Code:** PDW4403

**Instructor:** Anna Fialkoff, Horticulturist, New England Wild Flower Society

**Fee:** \$26 (Member)/\$32 (Nonmember)

**Limit:** 15

**Certificate:** Elective: DW/Adv.HD

---

## GROWING THE FUTURE OF GARDEN IN THE WOODS

From the renewal of the Curtis Woodland Garden to the old meadow renovation, Garden in the Woods continues to evolve each season. Learn from Botanic Garden Director Mark Richardson what changes to expect in the upcoming season and what plans are underway for the future of the Garden.

**Thursday, October 25, 2018, 6:30-8 p.m.**

Garden in the Woods, Framingham, MA

**Program Code:** LEC0701

**Instructor:** Mark Richardson, Botanic Garden Director, New England Wild Flower Society

**Fee:** \$20 (Member)/\$24 (Nonmember)

**Limit:** 75

---

## RESIDENTIAL LANDSCAPE DESIGN

This multisession course tackles the different aspects of the landscape design process. Workshop sessions focus on design methods using site analysis techniques and schematic design tools. Participants consult with the instructor and work on projects of their own choosing. Discussions about plants and habitats are interspersed with lectures on design principles, including criteria for making plant choices and determining placement in the landscape.

Garden in the Woods, Framingham, MA

**Fee:** \$231 (Member)/\$272 (Nonmember)

**Limit:** 12

**Certificate:** Core: HD; Elective: Adv.HD

*Choose one of two sections:*

**Thursdays, November 8, 15, 29,  
December 6, 13, 2018, 1-4 p.m.**

**Program Code:** HOR3999

**Instructor:** Cheryl Salatino, landscape designer, Dancing Shadows Garden Design, and Massachusetts certified horticulturalist

**Cosponsor:** Ecological Landscape Alliance

**Tuesdays, February 5, 12, 19, 26, and  
March 5, 12, 19, 2019, 6:30-8:30 p.m.**

**Program Code:** HOR4002

**Instructor:** Karen Sebastian, principal, Karen Sebastian, LLC, Landscape Architecture

---

## WHAT TO PROPAGATE AND HOW TO DO IT

While many plants are difficult to propagate, others are extremely easy. Sow 100 seeds of spotted wintergreen and a single seedling may emerge; sow 100 seeds of spotted bee balm and somehow 150 seedlings pop up! Join Dan Jaffe to learn not only how to propagate, but what to propagate to maximize plantings.

**Fridays, November 9, 16, 2018, 10 a.m.-12 p.m.**

Garden in the Woods, Framingham, MA

**Program Code:** HOR1212

**Instructor:** Dan Jaffe, Propagator and Stock Bed Grower, New England Wild Flower Society

**Fee:** \$53 (Member)/\$64 (Nonmember)

**Limit:** 15

**Certificate:** Elective: HD/Adv.HD

---

## NATIVE ARRANGEMENTS

This session uses native plant material gathered from Nasami Farm to create a beautiful arrangement for the home or a centerpiece for the Thanksgiving table. Participants walk the farm and learn the best practices for collecting plant materials, then create a unique display piece in the classroom. Bring pruners and a container or vase.

**Sunday, November 18, 2018, 1-4 p.m.**

Nasami Farm, Whatley MA

**Program Code:** HOR2904

**Instructor:** Kate Stafford, horticulturalist

**Fee:** \$40 (Member)/\$48 (Nonmember)

**Limit:** 15

**Certificate:** Elective: all certificates

---

---

## LOW MAINTENANCE GARDENING

While native plants are said to be well-adapted to New England, that doesn't mean just any native will do. Though trilliums and lady slippers are beautiful, they rarely thrive in built landscapes without considerable care – but many other plants do. Choosing certain species can produce built landscapes that require little care after they've been established. Join Dan Jaffe to learn about plants that thrive and spread on their own, and even weed the garden.

**Wednesday, November 28, 2018, 10 a.m.-12 p.m.**

Garden in the Woods, Framingham, MA

**Program Code:** HOR4044

**Instructor:** Dan Jaffe, Propagator and Stock Bed Grower, New England Wild Flower Society

**Fee:** \$26 (Member)/\$32 (Nonmember)

**Limit:** 16

**Certificate:** Elective: HD

**Cosponsor:** Ecological Landscape Alliance

---

## MEADOWS 1-2-3

No one can grow an instant meadow, but this one-day seminar builds participants' understanding of what it takes to create and maintain a meadow. Appropriate for those interested in starting a meadow or in improving an existing one. Extensive resource material included. Bring a bag lunch.

**Friday, November 30, 2018, 10 a.m.-4 p.m.**

Nasami Farm, Whatley, MA

**Program Code:** HOR8001

**Instructor:** Kathy Connolly, landscape designer, Speaking of Landscapes, LLC

**Fee:** \$80 (Member)/\$96 (Nonmember)

**Limit:** 20

**Certificate:** Elective: HD/Adv.HD

**Cosponsor:** Ecological Landscape Alliance

---

---

## PROPAGATING NATIVE PLANTS FROM SEED: PART 1 - DORMANCY AND SOWING TECHNIQUES

Learn to propagate native plants from seed in this two-part, hands-on workshop that focuses on practical methods for small-scale propagation. This workshop is appropriate for beginners and propagators with some experience. Take one or both classes. Part 1 explores seed biology, overcoming dormancy, and sowing techniques.

**Saturday, December 8, 2018, 1-4 p.m.**

Nasami Farm, Whately, MA

**Program Code:** HOR1807

**Instructor:** Kate Stafford, horticulturalist

**Fee:** \$40 (Member)/\$48 (Nonmember)

**Limit:** 16

**Certificate:** Elective: all certificates

---

## DESIGN-LESS GARDENING

Rethink the old rules of gardening. How many inches of bark mulch is needed between plants? Should weeds be pulled? Is it necessary to clean the garden every fall? Some of these rules make sense; some do not. Join Dan Jaffe for an exploration of the rules of gardening and learn how to build beautiful, resilient, and ecologically viable gardens without the services of a full-time gardener.

**Friday, December 14, 2018, 10 a.m.- 12 p.m.**

Garden in the Woods, Framingham, MA

**Program Code:** HOR8021

**Instructor:** Dan Jaffe, Propagator and Stock Bed Grower, New England Wild Flower Society

**Fee:** \$26 (Member)/\$32 (Nonmember)

**Limit:** 16

**Certificate:** Elective: HD/Adv.HD

**Cosponsor:** Ecological Landscape Alliance



Great rosebay (*Rhododendron maximum*)



## LANDSCAPE FOR LIFE

This intensive introductory course will provide the knowledge, skills, and understanding to create a great-looking garden that is healthier for people and for the environment. The course is based on the principles of the Sustainable Sites Initiative, the nation's first rating system for sustainable landscapes. The comprehensive curriculum covers a range of topics, including soils, water, plants, and landscape materials.

**Wednesdays, January 9, 16, 23, 30, 2019, 12-3 p.m.**

The Arnold Arboretum, Boston, MA

**Program Code:** HOR3720

**Instructor:** Mark Richardson, Botanic Garden Director, New England Wild Flower Society

**Fee:** \$185 (Member)/\$218 (Nonmember)

**Limit:** 16

**Certificate:** Core: Adv.HD; Elective: HD

**Cosponsor:** The Arnold Arboretum of Harvard University

## DIVERSIFY YOUR LAWN

Who says lawns need to be monocultures or only made of grasses? Enrich the traditional lawn with other complementary plants that bloom at different times and add intrigue. Learn how to identify the plants that already grow in lawn as “weeds,” and to incorporate new plants that create a rich, wildlife-friendly tapestry.

**Tuesday, January 15, 2019, 1-2:30 p.m.**

Garden in the Woods, Framingham, MA

**Program Code:** HOR4116

**Instructor:** Anna Fialkoff, Horticulturist, New England Wild Flower Society

**Fee:** \$20 (Member)/\$24 (Nonmember)

**Limit:** 16

**Certificate:** Elective: HD/Adv.HD

**Cosponsor:** Ecological Landscape Alliance

## UNDERSTANDING AND MANAGING SOILS

This one-day intensive explores the biotic and abiotic components that create native soils and explains how these factors inform local flora. The class takes a closer look at soil structure and soil biology in miniature lab experiments.

**Saturday, February 9, 2019, 10 a.m.-4 p.m.**

Nasami Farm, Whately, MA

**Program Code:** HOR3904

**Instructor:** Alexis Doshas, Propagator and Facilities Coordinator, Nasami Farm, New England Wild Flower Society

**Fee:** \$92 (Member)/\$109 (Nonmember)

**Limit:** 16

**Certificate:** Core: HD; Elective: all certificates

**Cosponsor:** Ecological Landscape Alliance

---

## WILD EDIBLES: WHAT TO GROW, WHAT TO FORAGE, AND WHAT TO DO WITH IT

New England is chock-full of unique and tasty plants, but knowing which ones to eat, where to get them, and how to prepare them can leave one guessing. Join Dan Jaffe for a crash course on edibles. Discussion includes sustainable foraging techniques, species worth growing at home, flavors, and recipes.

**Wednesday, February 13, 2019, 1-3 p.m.**

Garden in the Woods, Framingham, MA

**Program Code:** HOR2095

**Instructor:** Dan Jaffe, Propagator and Stock Bed Grower, New England Wild Flower Society

**Fee:** \$26 (Member)/\$32 (Nonmember)

**Limit:** 15

---

## WINTER PRUNING

Proper pruning of trees and shrubs improves their health and structure while enhancing their appearance in the landscape. Gain hands-on experience and learn basic pruning principles, including how to make proper cuts, when to prune different species, and how to select and maintain tools.

**Tuesday, March 12, 2019, 1-3 p.m.**

Garden in the Woods, Framingham, MA

**Program Code:** HOR1213

**Instructor:** Anna Fialkoff, Horticulturist, New England Wild Flower Society

**Fee:** \$26 (Member)/\$32 (Nonmember)

**Limit:** 10

**Certificate:** Elective: HD

---

## CURRENT TRENDS IN HORTICULTURE

The horticulture field is constantly evolving to reflect changing tastes in and expectations for the built landscape. Hear from several experts in the field about topics ranging from pollinators to stormwater, and learn how the field is adapting to a changing climate.

**Thursday, March 14, 2019, 6:30-8 p.m.**

Garden in the Woods, Framingham, MA

**Program Code:** HOR8020

**Instructor:** Moderator: Mark Richardson, Botanic Garden Director, New England Wild Flower Society

**Fee:** \$26 (Member)/\$32 (Nonmember)

**Limit:** 75

**Certificate:** Elective: HD/Adv.HD

**Cosponsor:** Ecological Landscape Alliance

---

## RIGHT PLANT, RIGHT PLACE: INTRODUCTION TO CHOOSING NATIVE PLANTS

Join a workshop discussion of native plant selection, site assessment, and methods for choosing the right plant for the right place. Native plants offer a higher rate of success, as these plants are well-suited for the North-eastern climate, soil conditions, and environment. They require less maintenance and fertilizer, and permit more time to enjoy the garden. Native plants also support a healthy ecosystem, including pollinators and birds.

**Thursday, March 21, 2019, 6:30-8:30 p.m.**

Nasami Farm, Whately, MA

**Program Code:** PDW4001

**Instructor:** Alexis Doshas, Propagator and Facilities Coordinator, Nasami Farm, New England Wild Flower Society

**Fee:** \$26 (Member)/\$32 (Nonmember)

**Limit:** 16

**Certificate:** Elective: DW/Adv.HD

---





## IN THE LANDSCAPE

Nothing beats the experience of seeing beautiful design with native plants. These expert-led excursions examine native plants and explore techniques to cultivate them for function and beauty.

### FIELD TRIP DIFFICULTY RATING

#### Easy

The hike covers mostly level ground and possibly a few gentle hills; walking surfaces are relatively smooth. Easy hikes are generally suitable for anyone who enjoys walking.

#### Easy/moderate

The hike is not flat, but the elevation gain is less than 500 feet per mile. Hikers should be prepared for some gentle uphill walking and possibly a few short, steeper sections.

#### Moderate

The hike ascends at a steady incline, usually 500-800 feet per mile, which would be unsuitable for someone not accustomed to hiking.

#### Moderate/difficult

The hike is challenging, with an average elevation gain of 500-800 feet per mile and some steeper sections or rougher walking conditions. This designation also describes hikes that are quite steep but relatively short.

#### Difficult

The hike features steep inclines and rough footing or rock scrambles. The gain in elevation averages more than 800 feet per mile and frequently reaches or exceeds 1,000 feet or more per mile.

### NATIVE PLANTINGS AND FORMAL GARDEN DESIGN

Stroll through the breathtaking Fells Historic Estate & Gardens to study elements of formal garden design and learn how to choose and use native plants to create similar elegant effects. This landscape study also addresses the positive impact of native plant substitutions on garden ecology and the ways participants might translate these strategies on their own properties.

**Friday, September 7, 2018, 1-3 p.m.**

The Fells Historic Estate & Gardens, Newbury, NH

**Program Code:** HDT8053

**Instructor:** Shayna Levesque, historic gardens staff, The Fells

**Fee:** \$24 (Member)/\$28 (Nonmember)

**Limit:** 16

**Certificate:** Field: HD/Adv.HD

**Sponsor:** The Fells Historic Estate & Gardens



The Fells Historic Estate



## NEW TAKES ON HISTORIC LANDSCAPES: EUSTIS ESTATE

Often, gardeners think they must choose between archetypes of the “wild, native plant garden” and the “formal, classic garden,” but there are ecologically friendly ways to create an elegant effect. Utilizing the garden and extensive land at the Eustis Estate, this interdisciplinary walk and discussion delves into historic landscape design and plantings and teaches participants different ways to replicate the visual sophistication of these gardens using native plants.

**Friday, September 14, 2018, 1:30-3:30 p.m.**

Eustis Estate, Milton, MA

**Program Code:** HDT8051

**Instructor:** TBA

**Fee:** \$24 (Member)/\$28 (Nonmember)

**Limit:** 16

**Certificate:** Field: HD/Adv.HD

**Cosponsor:** Historic New England

## PLANNING FOR POLLINATORS: CASEY FARM

Native pollinators and the local plant biodiversity they promote are critical to food production. Utilizing the community farm space at historic Casey Farm, this interactive workshop teaches participants how to choose native plants that encourage native pollinators, thereby building healthier local ecosystems. The class is geared toward edibles plots, but can be applied to ornamental gardens as well.

**Saturday, September 15, 2018, 1-3 p.m., rain date Saturday, September 29, 2018, 1-3 p.m.**

Casey Farm, Saunderstown, RI

**Program Code:** HDT8052

**Instructor:** TBA

**Fee:** \$24 (Member)/\$28 (Nonmember)

**Limit:** 20

**Certificate:** Field: HD/Adv.HD

**Cosponsor:** Historic New England

Eustis Estate





---

## GREAT MEADOWS, LATE SEASON

Great Meadows is exactly what it sounds like: a great, wet meadow that spans a large tract of land in eastern Massachusetts. Join Dan Jaffe for walk around the impoundments. Explore open wetland species such as cardinal flower, rose mallow, and showy tick trefoil while surrounded by beavers, blue heron, and marsh wren. Participants identify species and discuss their cultivation.

**Sunday, September 30, 2018, 9-11 a.m.**

Great Meadows, Concord, MA

**Program Code:** HDT8047

**Instructor:** Dan Jaffe, Propagator and Stock Bed Grower, New England Wild Flower Society

**Fee:** \$21 (Member)/\$25 (Nonmember)

**Limit:** 15

**Certificate:** Field: HD/Adv.HD

---

## TRACING LANDSCAPE HISTORY: CAMBRIDGE

What can the presence (or absence) of greenery teach about the layered history of a place? This walking tour leads participants in an analysis of the changing landscape, guided by evidence from significant trees in the neighborhood. The discussion addresses local inhabitants' relationship to native plants over generations. Wear walking shoes and dress for the weather.

**Friday, October 5, 2018, 1:30-3 p.m.**

Cambridge, MA

**Program Code:** HDT8050

**Instructor:** Courtney Allen, landscape historian and Director of Public Programs, New England Wild Flower Society

**Fee:** \$24 (Member)/\$28 (Nonmember)

**Limit:** 12

**Certificate:** Field: FB; HD/Adv.HD



Great Meadows

## STORY TIME AND MUSICAL PLAY AT GARDEN IN THE WOODS

Children listen to a nature-themed story, sing songs related to topic of the day, and make nature-inspired crafts. Stories are geared for children ages three to eight. Afterward, children are invited to explore the local flora and fauna in the Garden, play in the Family Activity Area, or pick up a Scavenger Hunt card and take a walk through the woods.

**Saturdays, August 11, 25; September 8, 22, 2018, 10:30-11:30 a.m.**

Garden in the Woods, Framingham, MA

**Program Code:** FAM7530

**Instructor:** Elaine Kessler, professional storyteller and children's educator

**Fee:** Free of charge with Garden admission





# registration

To register for programs, please visit [www.newenglandwild.org/learn/our-programs](http://www.newenglandwild.org/learn/our-programs). Visa and MasterCard accepted. For questions or difficulties regarding registration, call 508-877-7630, ext. 3303.

Advance registration is required for all fee-based programs and is accepted on a first-come, first-served basis upon full payment. Early registration is encouraged; programs with insufficient registration may be cancelled five business days before the scheduled start date. If your requested program is filled, please add yourself to the waiting list; if space becomes available, you will be contacted according to your position on the waiting list. No refunds or transfers can be given for withdrawals within a week of the program start date, for programs already in progress, or for class sessions you have not attended.

## Equal Access

If you need assistance or special accommodations, call 508-877-7630, ext. 3303, at the time you register or as soon as possible thereafter.

# membership

**For immediate discounts on programs, join or renew when you register.**

Members help conserve and promote the region's native plants to ensure healthy, biologically diverse landscapes.

## Membership benefits include:

- 20% discount on educational programs throughout New England
- Annual subscription to Society publications
- Monthly member e-newsletter
- Discounts at a wide range of regional and mail-order nurseries through our Nursery Partner Program and our Garden Shops
- Access to members-only on-demand webinars
- Invitations to special, members-only events

## Membership levels

- Individual \$40
- Individual with Garden Access \$55
- Family/Friends \$75
- Contributor \$115
- Supporter \$250
- Sustainer \$500
- Conservation Circle \$1,000

For a full description of member benefits, please visit [www.newenglandwild.org/membership](http://www.newenglandwild.org/membership) or call 508-877-7630 x3104.



# make an impact

New England Wild Flower Society is a leader in conservation and horticulture programming, pioneering models such as the first independent field botany certification program. Public education is key to conserving the region's native plants and to ensuring the health and diversity of our landscapes.

The Society offers hundreds of unique public programs each year, including:

- Adult learning opportunities at Garden in the Woods, Nasami Farm, six native plant sanctuaries, and additional locations throughout New England
- Online learning through courses, webinars, and digital tools
- Regional initiatives such as Pollinate New England
- Continuing education for professionals in relevant fields
- School programs at Garden in the Woods

## Support for educational activities comes from generous friends like you.

Your gift today will help grow awareness and knowledge about the importance of native plants in their habitats and in cultivated landscapes.

## Donate online at: [newenglandwild.org/fundprograms](http://newenglandwild.org/fundprograms)

phone at: 508-877-7630 x3802

mail (please include this page) to: New England Wild Flower Society  
Philanthropy Department  
180 Hemenway Road  
Framingham, MA 01701

**Yes! You can count on me to support native plant education.**

Name: \_\_\_\_\_

Street: \_\_\_\_\_

City/State/Zip: \_\_\_\_\_

Email/Phone: \_\_\_\_\_

Check enclosed (payable to New England Wild Flower Society)

\$1,000     \$625     \$300     \$100     \$50     Other

Additional:

- My donation is coming from a donor advised fund or family foundation.
- My/My spouse's company will match my gift. Form enclosed.
- My business is interested in sponsoring programs, please contact me.
- I would like to support new initiatives, please contact me.

*This donation will not renew your membership except at the \$1,000 Conservation Circle level.*



JOIN A SOCIETY-SPONSORED TRIP TO

# Armenia and Georgia

MAY 28 - JUNE 12, 2019

Explore the rich natural heritage  
of these magnificent countries in the  
Caucasus between Europe & Asia!

[newenglandwild.org/learn](http://newenglandwild.org/learn)



**NEW ENGLAND WILD FLOWER SOCIETY**  
HEADQUARTERS & GARDEN IN THE WOODS  
180 Hemenway Road  
Framingham, Massachusetts 01701-2699

ADDRESS SERVICE REQUESTED