


SPRING/SUMMER 2016

NEW ENGLAND  
WILD  
FLOWER  
SOCIETY



# learn+grow

THE PROGRAMS OF NEW ENGLAND WILD FLOWER SOCIETY



*Conserving and promoting  
New England's native plants  
to ensure healthy, biologically  
diverse landscapes*

The mission of New England Wild Flower Society is to conserve and promote the region's native plants to ensure healthy, biologically diverse landscapes.

Founded in 1900, the Society is the nation's oldest plant conservation organization and a recognized leader in native plant conservation, horticulture, and education.

The Society has its headquarters at Garden in the Woods, a renowned native plant botanic garden in Framingham, Massachusetts, that attracts visitors from all over the world. From this base, 25 staff and 750 volunteers work throughout New England to monitor and protect rare and endangered plants, collect and preserve seeds to ensure biological diversity, detect and control invasive species, conduct research, and offer a range of educational programs.

The Society also operates a native plant nursery at Nasami Farm in western Massachusetts and has eight sanctuaries in Maine, Massachusetts, New Hampshire, and Vermont that are open to the public.



NEW ENGLAND WILD FLOWER SOCIETY  
180 Hemenway Road, Framingham, MA 01701  
T 508-877-7630 F 508-877-3658  
TTY 508-877-6553  
education@newenglandwild.org  
www.newenglandwild.org

**Volume 9, Number 1, Spring/Summer 2016**

*Learn + Grow* is published twice a year by New England Wild Flower Society. Members receive discounts on all programs. Annual membership dues start at \$40 for individuals. See page 29 for information.

Copyright© 2016 New England Wild Flower Society®. All rights reserved. No material in this publication may be reproduced or used in any way without written consent. For permission, contact Editor, New England Wild Flower Society, 180 Hemenway Road, Framingham, MA 01701.

Printed on recycled paper.

*This publication was made possible through the generosity of Jackie and Tom Stone.*

---

**On the Cover**

*Trillium grandiflorum* (white trillium)

Photo by Dan Jaffe, New England Wild Flower Society

---

**Continuing Education Units (CEUs)**

Many of our programs qualify for continuing education units. Below is a list of CEUs we offer. Visit [www.newenglandwild.org/programs](http://www.newenglandwild.org/programs) for a list of qualifying programs.

**AOLCP** - Northeast Organic Farming Association Accredited Organic Land Care Professionals

**CFE** - Society of American Foresters' Continuing Forestry Education

**MCH** - Massachusetts Certified Horticulturist

**MCA** - Massachusetts Certified Arborist



# contents

Date	Program	State	Page			
<b>CERTIFICATES IN NATIVE PLANT STUDIES</b>			<b>3</b>			
3/16	Certificate Orientation Webinar	MA	3			
<b>ONLINE LEARNING</b>			<b>5</b>			
3/14	Plants 101: Introduction to the Green World		5			
5/2	Plants 102: Deeper into the Green World		5			
7/18	Introduction to Designing with Native Plants		5			
3/2	Webinar: Attracting Pollinators to Your Garden		6			
3/7	Webinar: Conserving the Rare Plants of New England		6			
3/30	Webinar: The Tastiest Native Edibles		6			
4/15	Webinar: Seed Banking for Conservation		6			
8/11	Webinar: Twenty Great Native Plants for your Garden		6			
<b>SPECIAL EVENTS</b>			<b>7</b>			
	Wildflowers of New England Book Tour		7			
4/30	Arbor Day Celebration and Tree Giveaway	MA	8			
5/6	Placemakers Lecture	MA	8			
5/9	Trillium Week	MA	9			
6/18	Plants and Pints	MA	11			
<b>BOTANY + CONSERVATION</b>			<b>12</b>			
3/3	Introduction to Prescribed Fire	MA	12			
4/23	Willows	MA	12			
4/26	Wildflowers of New England	MA	13			
4/27	Wildflowers of New England	MA	13			
6/1	Native New England Shrubs	MA	13			
6/2	Watercolor in the Garden	MA	14			
6/4	Wildflower Walk	MA	14			
6/10	New England Plant Communities	MA	14			
6/24	Basic Wetland ID and Delineation	MA	14			
	New England Plant Diversity: Sessions 1-5	MA	15			
7/6	Introduction to Plant Families	MA	16			
7/7	Wetland Shrubs	MA	16			
7/8	Survey of Grasses of the Northeast	MA	16			
7/13	With Mary: The Audubon of Botany	MA	17			
7/16	Introduction to Native Ferns	MA	17			
7/17	Introduction to Carex	MA	18			
7/24	Introduction to Native Ferns	VT	17			
8/6	Field Identification Techniques	MA	18			
8/9	Hydric Soils	MA	19			
8/11	Botanic Inventory Methods	MA	19			
8/27	Mushrooms for Beginners	MA	19			
9/8	Native New England Shrubs	MA	13			
9/27	Framework Trees of New England	MA	20			
9/29	Plant Form and Function	MA	20			
10/14	Invasive Plants: Identification, Documentation, and Control	MA	21			
1/15	Conservation Biology	MA	21			
<b>IN THE FIELD</b>			<b>22</b>			
5/7	Niquette Bay State Park	VT	22			
5/7	Ponemah Bog	NH	23			
5/8	Wild Edibles	MA	23			
5/15	Field Farm	MA	23			
5/20	North Truro Dunes Walk	MA	24			
5/20	Devil's Den	CT	24			
5/21	Gifford Woods State Park	VT	25			
5/22	Arcadia Wildlife Sanctuary	MA	25			
6/20	Waterboro Barrens	ME	26			
6/21	Eshqua Bog Natural Area	VT	26			
6/25	Chapman Pond	CT	26			
6/29	Odiorne Point State Park	NH	27			
7/23	Schoodic Point	ME	27			
7/30	Mount Holyoke Range State Park	MA	27			
7/31	Old Pepper Place Nature Reserve	VT	28			
8/14	Orono Bog	ME	28			
8/27	Vossburg Hills	MA	28			
<b>URBAN GARDENING SERIES</b>			<b>29</b>			
3/6	Growing Plants from Seed	MA	29			
4/2	Managing Invasive Species	MA	29			
5/7	Managing Difficult Soils	MA	29			
6/11	Container Gardening	MA	29			
7/23	Tough Plants for Tough Places	MA	30			
8/13	Pruning Fundamentals	MA	30			
9/17	Planting Basics	MA	30			
<b>HORTICULTURE + GARDENING</b>			<b>31</b>			
3/4	Lawn Alternatives	CT	31			
3/11	Rain Gardens	CT	31			
3/12	Transforming Your Yard into Habitat	MA	32			
3/13	Kill Your Lawn	MA	32			
3/15	Native Edibles	MA	32			
3/23	Pollinator Plants for Landscapers	CT	33			
4/24	Measuring Soil Health and Managing Site Challenges in an Urban Landscape	MA	33			
4/28	Native Herbaceous Plant Materials: Early Season	MA	33			
4/30	Low-Maintenance Design with Native Plants	MA	34			
5/1	Understanding Scale in the Garden	MA	34			
5/31	Designing Gardens for Small Spaces	MA	34			
6/2	Grow Your Own Meadow	MA	35			
6/5	Native Plants for Professionals	MA	35			
6/22	Shady Edibles	MA	36			
6/26	Conserving and Gardening for Monarchs	MA	36			
7/12	Landscape for Life	MA	36			
7/20	Native Herbaceous Plant Materials: Late Season	MA	37			
8/6	Pollinators in Peril	MA	37			
9/1	Native Woody Plant Materials	MA	38			
11/2	Horticultural Techniques	MA	38			
2/7	Residential Landscape Design	MA	39			
2/8	Understanding and Managing Soils	MA	39			
<b>IN THE GARDEN</b>			<b>40</b>			
4/26	Yankee Garden Tour	MA	40			
5/19	Watertown Life-Friendly Gardens Tour	MA	40			
6/5	Keeping it Simple	NH	41			
7/28	Natives, Pollinators, and Your Backyard	MA	41			
<b>CHILDREN + FAMILIES</b>			<b>42</b>			
	Story Time and Musical Play	MA	42			
3/20	Spring Equinox Frolic	MA	42			
4/3	Salamander Celebration	MA	43			
5/21	Vernal Pools are Cool	MA	43			
<b>FAMILY HIKES</b>			<b>44</b>			
5/7	Water, Water Everywhere!	MA	44			
6/25	Fish Weir to Frog Pond	MA	44			
7/9	Acton Arboretum Bog	MA	44			
	Become a Member & Registration Policies		45			
	How to Register		46			
	Travel to China		47			

# certificates in native plant st

Whether you are interested in taking classes for fun, to add breadth and depth to your existing knowledge and skills, or to advance your career, our self-paced certificate programs in Native Plant Studies offer a unique opportunity to learn about the region's flora. Students enrolled in our certificate programs in Field Botany and Native Plant Horticulture and Design learn about identifying, cultivating, and conserving native New England plants while gaining a greater appreciation for their ecological importance. Students actively participate in ongoing public and private efforts to preserve and restore native New England flora. We offer programs for both Basic and Advanced certificates. To enter the Advanced program, students must complete the Basic Certificate or have enough experience to qualify for a Basic Certificate.

---

## CERTIFICATE ORIENTATION WEBINAR

Join Jessica Pederson, Director of Public Programs for New England Wild Flower Society, for this free webinar to learn about the curriculum and structure of the Society's certificate programs in Native Plant Studies. Preregistration is required.

**Wednesday, March 16, 6:30-8 p.m.**

**Program Code:** CER8000

---

## FIELD BOTANY

### Basic Curriculum

#### **Eight Core Courses** (all are required)

- Plant Form and Function
- Introduction to Plant Families
- New England Plant Communities
- Wildflowers of New England
- Framework Trees of New England
- Native New England Shrubs
- Field Identification Techniques
- Botanic Inventory Methods

#### **Four Elective Classes**

#### **Four Botanical Field Studies**

#### **Fifteen Hours of Community Service**

Students may volunteer with the Society or with a native plant or plant conservation-oriented organization.

### Advanced Curriculum

#### **Five Core Courses** (all are required)

- Conservation Biology
- New England Plant Diversity Sessions 1-5
- Advanced Plant Inventory Techniques
- Invasive Plants: Identification, Documentation, and Control
- Basic Wetland Identification and Delineation

#### **Four Elective Classes**

#### **Three Botanical Field Studies**

#### **Two Plant Diversity Workshops**

#### **Twenty-five Hours of Community Service**

Students must complete a Native Plant Community Service Leadership Project. Projects must benefit the community and further the Society's mission.



## ENROLL NOW!

Complete the certificate registration form on page 46 of this catalog or visit us online at [www.newenglandwild.org/learn/certificate](http://www.newenglandwild.org/learn/certificate) to learn more. There is a one-time certificate enrollment fee of \$30. Join the Society to receive discounts on programs.

### CERTIFICATE CREDIT KEY

*Most programs satisfy more than one requirement*

**FB**=Field Botany basic

**Adv.FB**=Field Botany advanced

**HD**=Horticulture and Design basic

**Adv.HD**=Horticulture and Design advanced

**Field**=botanical, horticultural, or design field study

**Core**=Core Courses

**Elective**=Elective Classes

**PDW**=Design or Plant Diversity Workshop

## HORTICULTURE AND DESIGN

### Basic Curriculum

#### Nine Core Courses (all are required)

- Residential Landscape Design
- Horticultural Techniques
- Understanding and Managing Soils
- Plant Form and Function
- Wildflowers of New England
- Native Herbaceous Plant Materials: Early Season
- Native Herbaceous Plant Materials: Late Season
- Native Woody Plant Materials
- Native New England Shrubs

#### Four Elective Classes

#### Four Horticulture and Design Field Studies

#### Fifteen Hours of Community Service

Students may volunteer with the Society or with a native plant or plant conservation-oriented organization.

### Advanced Curriculum

#### Four Core Courses (all are required)

- Landscape for Life
- Native Plants for Professionals
- New England Plant Communities
- Invasive Plants: Identification, Documentation, and Control

#### Four Elective Classes

#### Three Horticulture and Design Field Studies

#### Two Design Workshops

#### Twenty-five Hours of Community Service

Students must complete a Native Plant Community Service Leadership Project. Projects must benefit the community and further the Society's mission.

# online learning

As our first step toward making the Society's rich educational programming available to you wherever you are, we are delighted to introduce three online courses in native plant botany and design. These pilot courses are offered at no charge initially thanks to funding from the Institute of Museum and Library Services and a generous donor.

---

## PLANTS 101: INTRODUCTION TO THE GREEN WORLD

Join us as we explore New England's plant life. In this online and field course you will learn what plants are, how they function, and why they are essential to all life on earth. You'll also discover many of the region's native and non-native plants. This course includes four self-paced online modules offered over the course of four weeks, followed by a visit to a field site to be arranged by the student and a mentor.

**Monday, March 14 to Friday, April 8**

**Program Code:** BOTO101

**Instructor:** Elizabeth Farnsworth, Senior Research Ecologist, New England Wild Flower Society

**Fee:** Free

**Limit:** 30

**Certificate:** Elective: FB/Adv.FB

---

## PLANTS 102: DEEPER INTO THE GREEN WORLD

Delve deeper into the New England flora in this online and field course. Learn how plants change as they grow; how they interact with other species; and how geology, soils, land-use history, hydrology, and climate shape the plant communities of the region. You'll adopt a plant to observe throughout the course and have a unique opportunity to accompany an experienced botanist in the field. This course includes five weeks of

online instruction followed by a visit to a field site to be arranged by the student and a mentor. Plants 101 is a complement to Plants 102 but not a prerequisite.

**Monday, May 2 to Friday, June 3**

**Program Code:** BOTO102

**Instructor:** Elizabeth Farnsworth, Senior Research Ecologist, New England Wild Flower Society

**Fee:** Free

**Limit:** 30

**Certificate:** Elective: FB/Adv.FB

---

## INTRODUCTION TO DESIGNING WITH NATIVE PLANTS

This introduction will teach you the basics of designing with native plants and show you how to incorporate native plants into your garden and landscape. Discover the variety of native plants found throughout New England and learn how to design a visually interesting landscape that also supports biodiversity. This course includes five weeks of online instruction.

**Monday, July 18 to Friday, August 19**

**Program Code:** HORO100

**Instructors:** Elizabeth Farnsworth, Senior Research Ecologist and Anna Fialkoff, Horticulturist, New England Wild Flower Society

**Fee:** Free

**Limit:** 20

**Certificate:** Elective: HD/Adv.HD

# online learning

## WEBINARS

Join Society staff in our new live webinar series to learn about plant conservation, gardening, native plants, and more.

---

### ATTRACTING POLLINATORS TO YOUR GARDEN

There is no need to sacrifice beauty, order, or variety in order to attract pollinators to your garden. Join Dan Jaffe to learn about beautiful, low-maintenance plants that thrive in any environment and attract our flying, pollinating friends.

**Wednesday, March 2, 6:30-7:15 p.m.**

**Program Code:** HORW200

**Instructor:** Dan Jaffe, Propagator and Stock Bed Grower, New England Wild Flower Society

**Fee:** \$5 (Member) /\$8 (Nonmember)

---

### CONSERVING THE RARE PLANTS OF NEW ENGLAND

Join Bill Brumback to learn about the rare plants of New England and their habitats. Explore these amazing plants, the threats to them, and the options we have for conserving them.

**Monday, March 7, 10-10:45 a.m.**

**Program Code:** BOTW100

**Instructor:** Bill Brumback, Director of Conservation, New England Wild Flower Society

**Fee:** \$5 (Member) /\$8 (Nonmember)

---

### THE TASTIEST NATIVE EDIBLES

Let Dan Jaffe introduce you to the all-time tastiest native edible plants. These low-maintenance perennials play an important ecological role in your garden and will fill your belly with flavors that can't be found in the supermarket.

**Wednesday, March 30, 6:30-7:15 p.m.**

**Program Code:** HORW300

**Instructor:** Dan Jaffe, Propagator and Stock Bed Grower, New England Wild Flower Society

**Fee:** \$5 (Member) /\$8 (Nonmember)

---

### SEED BANKING FOR CONSERVATION

In New England, rare plant species have lost, on average, 67 percent of their known range and face multiple threats, from invasive species to habitat conversion to climate change. Seed banking is one critical strategy for conserving at-risk plant species. Join Michael Piantedosi as he discusses the sustainable collection and long-term conservation of native New England seeds.

**Friday, April 15, 10-10:45 a.m.**

**Program Code:** BOTW200

**Instructor:** Michael Piantedosi, NEPCoP/Seed Bank Coordinator, New England Wild Flower Society

**Fee:** \$5 (Member) /\$8 (Nonmember)

---

### TWENTY GREAT NATIVE PLANTS FOR YOUR GARDEN

Join Mark Richardson to learn about 20 of the easiest to grow and most attractive native plants for your New England garden.

**Thursday, August 11, 6:30-7:15 p.m.**

**Program Code:** HORW400

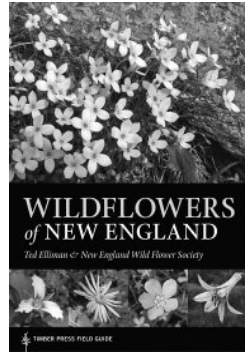
**Instructor:** Mark Richardson, Horticulture Director, New England Wild Flower Society

**Fee:** \$5 (Member) /\$8 (Nonmember)

# special events

## WILDFLOWERS OF NEW ENGLAND BOOK TOUR

Join botanist Ted Elliman for a look at the region's flora as described in his new book, *Wildflowers of New England*. Published by Timber Press in partnership with New England Wild Flower Society, this comprehensive illustrated guide describes more than 1,000 of New England's native and naturalized wildflowers. Come along as Ted discusses each state's natural communities, showing images of common and rare plants and highlighting species of note in each state. Books will be available for sale and a book signing will follow each lecture.



## WILDFLOWERS OF MASSACHUSETTS

**Saturday, April 16, 1-2:30 p.m.**

Garden in the Woods, Framingham, MA

**Program Code:** LEC8000

**Fee:** \$14 (Member) /\$16 (Nonmember)

## WILDFLOWERS OF MAINE

**Wednesday, June 1, 2-3:30 p.m.**

Coastal Maine Botanical Gardens, Boothbay, ME

**Program Code:** LEC8003

**Fee:** \$14 (Member) /\$16 (Nonmember)

**Cosponsor:** Coastal Maine Botanical Gardens

## WILDFLOWERS OF CONNECTICUT

**Thursday, April 21, 7-8:30 p.m.**

Greenwich Audubon, Greenwich, CT

**Program Code:** LEC8001

**Fee:** \$14 (Member) /\$16 (Nonmember)

**Cosponsor:** Greenwich Audubon

## WILDFLOWERS OF NEW HAMPSHIRE

**Thursday, June 2, 7-8:30 p.m.**

The Fells, Newbury, NH

**Program Code:** LEC8004

**Fee:** \$14 (Member) /\$16 (Nonmember)

**Cosponsor:** The Fells Historic Estate and Gardens

## WILDFLOWERS OF RHODE ISLAND

**Thursday, May 5, 7-8:30 p.m.**

University of Rhode Island, South Kingstown, RI

**Program Code:** LEC8002

**Fee:** \$5 (Member) /\$10 (Nonmember)

**Cosponsor:** Rhode Island Wild Plant Society

## WILDFLOWERS OF VERMONT

**Thursday, June 23, 7-8:30 p.m.**

Vermont Institute of Natural Science, Quechee, VT

**Program Code:** LEC8005

**Fee:** \$14 (Member) /\$16 (Nonmember)

**Cosponsor:** Vermont Institute of Natural Science



# special events

---

## ARBOR DAY CELEBRATION AND TREE GIVEAWAY

Come to this fun-filled, family-friendly day to celebrate native trees. There will be children's activities and games, interactive art projects, guided tours, tree-climbing demonstrations, an arborist truck on display, workshops on planting and pruning trees, and a native plant sale. We will give away 500 trees, including one for every visitor who joins us for the celebration. Trees will be distributed on a first-come, first-served basis.

**Saturday, April 30, 10 a.m.-4 p.m.**

Garden in the Woods, Framingham, MA

**Fee:** Free with Garden admission

---

## PLACEMAKERS LECTURE

The annual Placemakers Lecture highlights individuals and organizations that have gone above and beyond to reimagine and reinvent public spaces as public gardens and parks. This year we are showcasing the Friends of the Rail Park, a nonprofit organization working to repurpose a three-mile former rail line as public open space running through the heart of the Philadelphia. Spanning more than 50 blocks above and below street level, the Rail Park will traverse several diverse neighborhoods and link some of the city's most highly celebrated arts, cultural, and educational institutions. Phase 1 of the Rail Park is slated to break ground this year. Co-founder and Vice President of the Board Liz Maillie will provide an overview of the project, talk about its historical significance, and discuss the placemaking process and transformative potential of the park.

**Friday, May 6, 6:30-8 p.m.**

Garden in the Woods, Framingham, MA

**Program Code:** LEC7000

**Instructor:** Liz Maillie, Vice President, Friends of the Rail Park

**Fee:** \$15 (Member) /\$20 (Nonmember)



# special events

## TRILLIUM WEEK • May 9-15

In 2013 the Garden's Trillium Collection was recognized as a Nationally Accredited Plant Collection by the American Public Gardens Association's Plant Collections Network. This year, please join us in celebrating the beauty and variety of trilliums during a week-long affair at Garden in the Woods. Take a Trillium Tour with our horticultural experts; join us for a lecture by William Cullina, Executive Director of Coastal Maine Botanical Gardens; and attend one of our trillium demonstrations. Or simply stroll through the Garden on your own and enjoy the largest collection of trilliums north of Delaware during their peak flowering time. Society-grown trilliums are available for purchase on site. Children can learn about the genus *Trillium* and make crafts at our Story Time and Musical Play Hour.



# special events

---

## FROM OUR GARDEN TO YOURS

Choose and purchase trilliums directly from our propagation beds to take home. Take advantage of this unique opportunity available only during Trillium Week. Flag your trilliums during your visit; our staff will dig them at their ideal transplant time and prepare them for you to pick up at a later date. Potted trilliums will also be available for sale at the Garden Shop.

**Monday, May 9 through Friday May 13, 2-4 p.m.**

---

## GUIDED TRILLIUM TOURS

Join our horticultural staff for an up-close look at the Garden and our award-winning Trillium Collection. Tours meet at the visitor center.

**Monday, May 9 through Friday May 13, 1-1:30 p.m.**

**Fee:** Free with Garden admission

---

## UNDERSTANDING TRILLIUMS

Among our most beloved wildflowers, trilliums trace their lineage back 60 million years to the great temperate forests that once circled the globe, and these photogenic woodlanders possess a certain refinement and unhurried approach to life that can only come with age. Of the 48 species in the world, a full 75 percent occur only in the forests of eastern North America. Join William Cullina for a tour of the genus *Trillium*, illustrated with gorgeous photographs and exploring the evolution, distribution, and ecology of the plants as well as the charms and eccentricities of the eastern species.

**Thursday, May 12, 6:30-8 p.m.**

**Program Code:** LEC2075

**Instructor:** William Cullina, Executive Director, Coastal Maine Botanical Gardens

**Fee:** \$15 (Member) /\$20 (Nonmember)

---

## DIVIDING TRILLIUMS

Do you want your trillium patch to spread throughout your garden? In this demonstration, Dan Jaffe will teach you everything you need to know about turning one trillium into many, from which tools to use to how to divide different species.

**Saturday, May 14, 1:30-2 p.m.**

**Fee:** Free with Garden admission

---

## STORY TIME AND MUSICAL PLAY AT GARDEN IN THE WOODS

Children will listen to a trillium-themed story, sing songs, and make nature-crafts. For children ages three to six, but everyone is welcome.

**Saturday, May 14, 10:30-11:30 a.m.**

Family Activity Area

**Instructor:** Elaine Kessler, professional storyteller and children's educator

**Fee:** Free with Garden admission

---

## PLANTING AND CARING FOR TRILLIUMS

Good trillium care begins before you even break ground. Trillium-grower Dan Jaffe will show you how to select trillium species, prepare a site for planting, and care for a plant once it's in the ground.

**Sunday, May 15, 1:30-2 p.m.**

**Fee:** Free with Garden admission

# special events

---

## PLANTS AND PINTS

Celebrate the summer solstice in the Garden while enjoying craft beer, great music, local food, and a ceremonial lighting of the Ball of Fire. You won't want to miss this special summer night on the longest day of the year! Somerville's Aeronaut Brewing Company will provide seasonal craft beers, discuss the science of brewing, and show us how the brewery incorporates native plants such as staghorn sumac into its beer. Dan Jaffe will identify native plants you can use in beverages and teach you how to make three cocktails, including the back woods hot toddy and the pink monkey. Live music by the Ways and Means Committee will enhance the evening's festivities, and food will be available for purchase from a local food truck. The ticket price includes all the festivities and one craft beer. Additional drinks will be available for purchase. All guests must be at least 21 years old and proper identification is required.

**Saturday, June 18, 5-8 p.m.**

Garden in the Woods, Framingham, MA

**Program Code:** HOR1250

**Instructor:** Dan Jaffe, Propagator and Stock Bed Grower, New England Wild Flower Society and Ben Holmes, CEO, Aeronaut Brewing Company

**Fee:** \$25 (Member) /\$30 (Nonmember)





## INTRODUCTION TO PRESCRIBED FIRE

Prescribed fire, when planned for and implemented properly, is an effective land management, restoration, and maintenance tool. This course includes an overview of the resources available for assessing the benefits of prescribed fire; considerations for safe and responsible implementation of a prescribed burn; and guidelines on what to expect leading up to, during, and following a burn day. Participants are encouraged to bring information on a site where they are considering a burn. This session is designed as an introduction for land managers and is not intended to qualify anyone to conduct a prescribed burn.

**Thursday, March 3, 10 a.m.-4 p.m.**

Garden in the Woods, Framingham, MA

**Program Code:** BOT1105

**Instructor:** Joel R. Carlson, Principal Consultant and Owner, Northeast Forest and Fire Management, LLC and Tim Simmons, Restoration Ecologist, Massachusetts Natural Heritage & Endangered Species Program

**Fee:** \$57 (Member) /\$69 (Nonmember)

**Limit:** 30

**Certificate:** Elective: FB/Adv.FB

**Cosponsor:** Massachusetts Association of Conservation Commissions



## WILLOWS

This class will introduce you to the fascinating willow family and help you recognize and identify local and alien species in spring. After a class discussion that will include a slide show and demonstration of live material, we will visit a field site nearby and observe a few willow species. Bring a hand lens and waterproof footwear.

**Saturday, April 23, 10 a.m.-3 p.m.**

Garden in the Woods, Framingham, MA, and nearby field site

**Program Code:** PDW3350

**Instructor:** Alexei Zinoviev and Irina Kadis, botanists

**Fee:** \$60 (Member) /\$75 (Nonmember)

**Limit:** 12

**Certificate:** PDW: Adv.FB; Elective: FB



## WILDFLOWERS OF NEW ENGLAND

New to the world of native plants? There's no better way to study our regional flora than in the field. In this class, we will learn to identify New England's native flora by studying their habitats at Garden in the Woods. We will examine family characteristics, growth patterns, and key identification features of flowers, leaves, and stems. Bring a hand lens and *Wildflowers of New England*.

Garden in the Woods, Framingham, MA

**Instructor:** Ted Elliman, botanist and author of *Wildflowers of New England*

**Fee:** \$136 (Member) / \$170 (Nonmember)

**Limit:** 16

**Certificate:** Core: FB/HD; Elective: all certificates

*Choose one of two sections:*

**Tuesdays, April 26, May 3, 10, 6:30-9 p.m.;**

**Saturday, May 14, 10 a.m.-12:30 p.m.**

**Program Code:** BOT3001

**Wednesdays, April 27, May 4, 11, 18**

**10 a.m.-12:30 p.m.**

**Program Code:** BOT3000

## NATIVE NEW ENGLAND SHRUBS

Shrubs vary widely in size, shape, color, bark, flower, and fruit. This course will introduce you to almost 50 species of native New England shrubs, emphasizing plant identification, family characteristics, and historical plant uses. Bring a hand lens. Weekend sessions are held in off-site locations; directions will be provided during the first class.

Garden in the Woods, Framingham, MA, and field sites

**Instructor:** Roland "Boot" Boutwell, naturalist

**Fee:** \$200 (Member) / \$250 (Nonmember)

**Limit:** 16

**Certificate:** Core: FB/HD; Elective: all certificates

*Choose one of two sections:*

**Wednesdays, June 1, 8, 15, 6:30-8:45 p.m.;**

**Saturdays, June 4, June 11, 9 a.m.-1:30 p.m.**

**Program Code:** BOT3301

**Thursdays, September 8, 15, 22, 6:30-8:45 p.m.;**

**Saturdays, September 10, 17; 9 a.m.-1:30 p.m.**

**Program Code:** BOT3300

---

## WATERCOLOR IN THE GARDEN

Do you feel inspired when you visit the Garden or when you see plants in the field? This course will allow you to capture those experiences. Whether you're interested in observational plant portraits or looser landscape impressions, this course offers several techniques for achieving your desired style. We will start with a few short exercises and paint both indoors and outdoors in the Garden. Under the guidance of this talented teacher, beginners will master the basics and experienced students will advance their skills.

**Thursdays, June 2, 9, 16, 23, 30, July 7, 14, 21, 10 a.m.-12:30 p.m.**

Garden in the Woods, Framingham, MA

**Program Code:** ART6000

**Instructor:** Carol Govan, artist and naturalist

**Fee:** \$240 (Member) /\$260 (Nonmember)

**Limit:** 12

**Cosponsor:** Mass Audubon

---

## WILDFLOWER WALK

Whether you are new to native wildflowers or a long-time enthusiast, there is no better way to learn about regional flora than in the field. In this program, participants will learn to identify native flora in a variety of habitats.

**Saturday, June 4, 10-11:30 a.m.**

Daniel Webster Wildlife Sanctuary, Marshfield, MA

**Program Code:** BOT1081

**Instructor:** Ted Elliman, botanist and author of *Wildflowers of New England*

**Fee:** \$15 (Member) /\$20 (Nonmember)

**Limit:** 15

**Certificate:** Elective: FB/Adv.FB

**Cosponsor:** Mass Audubon's South Shore Sanctuaries

**To Register:** visit [www.massaudubon.org/get-outdoors/program-catalog](http://www.massaudubon.org/get-outdoors/program-catalog)

---

---

## NEW ENGLAND PLANT COMMUNITIES

For a relatively small region, New England boasts an astonishing variety of plant communities, ranging from freshwater and tidal wetlands to coastal dunes, grasslands, forests, and montane. Learn how soil, topography, moisture, geological conditions, glaciation, and historical use affect the vegetation of each community. We will study dominant canopy, structure, range, and characteristic species of each community and then apply this knowledge in the field.

**Fridays, June 10, 17, 24, 6-8:30 p.m.;**

**Saturdays, June 11, 18, 10 a.m.-2 p.m.**

Garden in the Woods, Framingham, MA; Susan B. Minns Wildlife Sanctuary, Princeton, MA; and Sly Ponds, Plymouth, MA

**Program Code:** BOT4000

**Instructor:** Ted Elliman, botanist and author of *Wildflowers of New England*

**Fee:** \$238 (Member) /\$280 (Nonmember)

**Limit:** 16

**Certificate:** Core: FB/Adv.HD; Elective: all certificates

---

## BASIC WETLAND ID AND DELINEATION

This two-day course introduces the principal elements of wetland identification: wetland hydrology; hydric soils; and hydrophytic plants. We will identify plants in the field, place a delineation line, and utilize web resources. Recommended gear includes a field notebook, field guides, soil color charts, an auger, and rainwear. Bring a bag lunch. Some pre-class reading is required.

**Friday, June 24, Saturday, June 25, 9 a.m.-4 p.m.**

Garden in the Woods, Framingham, MA

**Program Code:** WET2010

**Instructor:** Alan Anacheka-Nasemann, ecologist and wetland scientist

**Fee:** \$160 (Member) /\$200 (Nonmember)

**Limit:** 12

**Certificate:** Core: Adv.FB; Elective: FB

**Cosponsor:** Massachusetts Association of Conservation Commissions

---

## NEW ENGLAND PLANT DIVERSITY

Keeping up with changes in plant names can be challenging, but it reflects our expanding understanding of the plant kingdom based on genetics, a closer look at plant form, and new ways of analyzing relationships. Learn how to make sense of the new plant universe from one of the best botanists in the field, Arthur Haines. We recommend you take Session 1 first; Sessions 2–5 may be taken in any order. Recommended text: *Plant Systematics: A Phylogenetic Approach*.

Garden in the Woods, Framingham, MA

**Instructor:** Arthur Haines, Research Botanist, New England Wild Flower Society, author of *Flora Novae Angliae*

**Fee:** \$46 (Member) /\$54 (Nonmember)

**Limit:** 20

**Certificate:** Core: Adv.FB; Elective: all certificates



### SESSION 4

**Sunday, June 26, 2016, 1-4 p.m.**

In this class, students will investigate advanced tricolpate families, often referred to as euasterids (e.g., Lamiaceae, Plantaginaceae, Campanulaceae, Asteraceae).

**Program Code:** BOT2240

### SESSION 5

**Sunday, August 28, 2016, 1-4 p.m.**

In this session, students will gain insight into the breadth and complexity of plant identification. Hybridization and phylogeny will be discussed to provide a deeper appreciation for the role of evolutionary history in understanding organismal relationships.

**Program Code:** BOT2246

### SESSION 1

**Sunday, November 6, 2016, 1-4 p.m.**

This class will study the vocabulary needed to understand plant identification and classification based on vegetative and reproductive structures. An introduction to plant nomenclature, phylogeny, and scientific names will also be provided.

**Program Code:** BOT2205

### SESSION 2

**Sunday, February 26, 2017, 1-4 p.m.**

In this class, students will examine tracheophyte families, starting with free-sporing plants (e.g., ferns) and ending with three major groups of seed plants: nonflowering seed plants (i.e., conifers); magnoliids (i.e., primitive dicots); and monocots.

**Program Code:** BOT2230

### SESSION 3

**Sunday, March 26, 2017, 1-4 p.m.**

This class will focus on tracheophyte families referred to as the tricolpates (i.e., the majority of dicot plants). Discussion will include primitive tricolpates (e.g., Ranunculaceae, Papaveraceae, Amaranthaceae) and eurosids (e.g., Rosaceae, Betulaceae, Brassicaceae).

**Program Code:** BOT2236



---

## INTRODUCTION TO PLANT FAMILIES

To really know a plant, you must understand its family. In this class, we will use both microscopic and field investigation to decipher the clues to familial relationships and classifications of New England's wild plants. You will learn the basic formulas for plant structure and practice applying them to various families. Bring lunch and a hand lens.

**Wednesdays, July 6, 13, 20, 10 a.m.-2 p.m.**

Garden in the Woods, Framingham, MA

**Program Code:** BOT2260

**Instructor:** Carol Govan, naturalist

**Fee:** \$185 (Member) /\$218 (Nonmember)

**Limit:** 16

**Certificate:** Core: FB; Elective: all certificates

---

## WETLAND SHRUBS

With its varied wetland habitats, including a pond, a stream, and a bog, Garden in the Woods is an excellent field site for examining shrubs that grow in and around wetlands. You will be introduced to 15–20 New England shrubs as well as a handful of shrubs that grow in higher and drier habitats. Please bring lunch, a hand lens, and a field guide to shrubs, if you have them.

**Thursday, July 7, 10 a.m.-2 p.m.**

Garden in the Woods, Framingham, MA

**Program Code:** WET3019

**Instructor:** Roland "Boot" Boutwell, naturalist

**Fee:** \$53 (Member) /\$64 (Nonmember)

**Limit:** 16

**Certificate:** Elective: FB/Adv.FB

**Sponsor:** Massachusetts Association of Conservation Commissions



---

## SURVEY OF GRASSES OF THE NORTHEAST

Join the author of *Grasses of the Northeast* to explore grasses. Using dried specimens and microscope displays, we will study the characteristics of 10 tribes and over 40 genera of common grasses. The first day will be devoted to lecture and specimen examination. On the second day, we'll venture into the field, where you will have the opportunity to apply your new skills. Bring a hand lens and *Grasses of the Northeast*.

**Friday, July 8, 9 a.m.-3 p.m.; Saturday July 9 10 a.m.-2 p.m.**

Garden in the Woods, Framingham, MA

**Program Code:** PDW3518

**Instructor:** Dennis Magee, author of *Grasses of the Northeast*, and environmental consultant

**Fee:** \$88 (Member) /\$110 (Nonmember)

**Limit:** 16

**Certificate:** PDW: Adv.FB; Elective: all certificates

---

## WITH MARY: THE AUDUBON OF BOTANY

Known as the “Audubon of Botany,” painter and naturalist Mary Morris Vaux Walcott (1860–1940) created more than 400 water-color illustrations for a catalog of North American wildflowers. In this lecture by Marjorie Jones, who has written a biography of this fascinating, accomplished woman, you will learn about Walcott’s travel adventures, her correspondence with First Lady Lou Henry Hoover, and her work for the Bureau of Indian Affairs. Jones will explore the rich intersections of religion, pol-



itics, women’s history, science, and art during this transformative time and share exquisite images of Walcott’s paintings.

**Wednesday, July 13, 7-8:15 p.m.**

The Arnold Arboretum, Boston, MA

**Instructor:** Marjorie G. Jones, JD, MA, biographer

**Program Code:** LEC4054

**Fee:** Free (Member) /\$10 (Nonmember)

**Limit:** 90

**Cosponsors:** Wellesley College Botanic Gardens and The Arnold Arboretum

---

## INTRODUCTION TO NATIVE FERNS

Beautiful and flowerless, ferns are among the most ancient plants in the world. Learn to distinguish among the most common ferns of New England through lecture, microscopic examination of fresh plant material, and field study. By the end of class, you will be familiar with most of the ferns you encounter in the woods. Bring lunch and a hand lens if you have one.

**Fee:** \$60 (Member) /\$72 (Nonmember)

**Limit:** 16

**Certificate:** Elective: all certificates

*Choose one of two sections:*

**Saturday, July 16, 11 a.m.-3:30 p.m.**

Garden in the Woods, Framingham, MA

**Instructor:** Don Lubin, fern enthusiast

**Program Code:** BOT3410

**Sunday, July 24, 11 a.m.-3:30 p.m.**

Montshire Museum of Science, Norwich, VT

**Instructors:** Don Lubin and Alice Schori, fern enthusiasts

**Program Code:** BOT3412

**Cosponsor:** Montshire Museum of Science



---

## INTRODUCTION TO CAREX

Learn how to identify common species of *Carex*, the largest and most interesting genus of the New England sedges. You will become familiar with the terminology and structures of this group, identify common species, study their ecology, and start to learn how to use technical keys.

**Sunday, July 17, 10 a.m.-4 p.m.**

Garden in the Woods, Framingham, MA

**Program Code:** PDW3521

**Instructor:** Lisa A. Standley, botanist

**Fee:** \$80 (Member) /\$96 (Nonmember)

**Limit:** 15

**Certificate:** PDW: Adv.FB; Elective: FB

---

## FIELD IDENTIFICATION TECHNIQUES

Equip yourself with the skills and confidence you need to identify native plants in the field. Learn how to use field guides and professional keys, observe floral structures, recognize reliable family characteristics, and become familiar with botanical Latin. This course is designed for students who have taken the Society's Wildflowers of New England course or have some previous experience identifying wildflowers. Bring a hand lens and a bag lunch.

**Saturdays, August 6, 13, 20, 1-5 p.m.**

Garden in the Woods, Framingham, MA

**Program Code:** BOT2008

**Instructor:** Leslie Duthie, botanist

**Fee:** \$185 (Member) /\$218 (Nonmember)

**Limit:** 16

**Certificate:** Core: FB; Elective: all certificates

---

## HYDRIC SOILS

This course for environmental professionals serves as an introduction or refresher on hydric soils, with a focus on understanding the current field indicators of hydric soils in the United States (USDA-NRCS), the basis for the U.S. Army Corps of Engineers' soil descriptions. During the morning classroom session, we will review basic soil descriptors including color, texture, and soil development, specifically hydric characteristics and redoximorphic features. In the afternoon field session, we will learn to apply these indicators to soils. Bring available field equipment and a bag lunch; wear footwear appropriate for muddy conditions.

**Tuesday, August 9, 9 a.m.-4 p.m.**

Garden in the Woods, Framingham, MA

**Program Code:** BOT4005

**Instructor:** Amanda Atwell, CPSS, Project Scientist, Epsilon Associates, Inc. and Arthur Allen, CPSS, CWS, Vice President, EcoTec, Inc.

**Fee:** \$88 (Member) /\$110 (Nonmember)

**Limit:** 16

**Certificate:** Elective: FB/Adv.FB

**Cosponsor:** Massachusetts Association of Conservation Commissions

---

## BOTANIC INVENTORY METHODS

Learn botanical survey methods and spend a day inventorying the flora of a conservation property. The evening session will cover the basics of field preparation using a variety of maps, field guides, aerial photography, GPS units, field supplies, and data sheets. We will then spend a full day in the field putting the methods into practice. Bring a bag lunch, compass, hand lens, and GPS unit if you have one.

**Thursday, August 11, 6:30 -8:30 p.m.;**

**Thursday, August 18, 10 a.m.-4 p.m.**

Garden in the Woods, Framingham, MA, and field sites

**Program Code:** BOT2050

**Instructor:** Ted Elliman, botanist and author of *Wildflowers of New England*

**Fee:** \$123 (Member) /\$145 (Nonmember)

**Limit:** 16

**Certificate:** Core: FB; Elective: all certificates

**Cosponsor:** Massachusetts Association of Conservation Commissions

---

## MUSHROOMS FOR BEGINNERS

Mushrooms are tremendously diverse and play an important ecological role. In this class, we will first learn about basic fungal biology and identification and then head out to the Garden for a mushroom foray. After lunch, we will identify our finds using field guides and microscopes. Bring a bag lunch and a hand lens if you have one.

**Saturday, August 27, 10 a.m.-2 p.m.**

Garden in the Woods, Framingham, MA

**Program Code:** BOT3813

**Instructor:** David Hibbett, mycologist, Clark University

**Fee:** \$50 (Member) /\$62 (Nonmember)

**Limit:** 12

**Certificate:** Elective: FB/Adv.FB





## FRAMEWORK TREES OF NEW ENGLAND

Forests are a dominant feature of the New England landscape. Join us as we explore the history, changes in composition, and ecology of the New England forest from the Ice Age through European settlement. Learn to identify native New England trees, their habitats, and their communities. Explore the impact of natural and human disturbances on the forested landscape and learn to recognize stands of different ages. The course includes two weekend field trips.

**Tuesdays, September 27, October 4, 18, 25, 6:30-8:30 p.m.;** **Saturday, October 15, 12-4 p.m.;** **Saturday, October 22, 9 a.m.-1 p.m.**

Garden in the Woods, Framingham, MA; Harvard Forest, Petersham, MA; The Arnold Arboretum, Boston, MA

**Program Code:** BOT3200

**Instructor:** Karen Sebastian, Principal, Karen Sebastian, LLC, Landscape Architecture

**Fee:** \$246 (Member) /\$290 (Nonmember)

**Limit:** 16

**Certificate:** Core: FB; Elective: all certificates

## PLANT FORM AND FUNCTION

In this introduction to botany, you will learn the basics of plant anatomy and physiology and study the fundamentals of the plant kingdom through slides and live materials. Microscopic study will provide an up-close look at roots, stems, leaves, and their component tissues. You will examine flowers, fruits, and seeds and discuss pollination, fertilization, dispersal, and germination, with an emphasis on the relationship between plant form and function.

**Thursdays, September 29, October 6, 13, 20, 27, November 3, 6:30-9 p.m.**

Garden in the Woods, Framingham, MA

**Program Code:** BOT1000

**Instructor:** Nancy M. Eyster-Smith, Ph.D., botanist

**Fee:** \$200 (Member) /\$250 (Nonmember)

**Limit:** 16

**Certificate:** Core: FB/HD; Elective: all certificates

## INVASIVE PLANTS: IDENTIFICATION, DOCUMENTATION, AND CONTROL

What's all the fuss? Botanists, ecologists, horticulturists, and conservation professionals are united in their concern about invasive plants, but there is still some confusion about what they are and what to do about them. In this class, you will study the basic ecological problems created by these aggressive species and the complicated issues involved in controlling them. You will learn to identify some of New England's most common invasive species through images, specimens, and a short local field visit. Bring a bag lunch and a hand lens; wear waterproof shoes and dress appropriately for the weather.

**Friday, October 14, 6:30-8:30 p.m.; Saturday, October 15, 10 a.m.-4 p.m.**

Garden in the Woods, Framingham, MA, and field site

**Program Code:** BOT5130

**Instructor:** Ted Elliman, botanist and author of *Wildflowers of New England*

**Fee:** \$124 (Member) /\$145 (Nonmember)

**Limit:** 16

**Certificate:** Core: Adv.FB/Adv.HD; Elective: all certificates

## CONSERVATION BIOLOGY

In this introduction to conservation biology and biodiversity, you will learn what makes a species vulnerable to extinction and which strategies and tools can be used to protect species and ecosystems. We will explore the interdisciplinary nature of conservation biology through readings, group exercises, and video clips. Participants will receive a bibliography of resources for further study. Bring a bag lunch.

**Sundays, January 15, 22, 29, 2017, 10 a.m.-3:30 p.m. (Snow date: February 5)**

Garden in the Woods, Framingham, MA

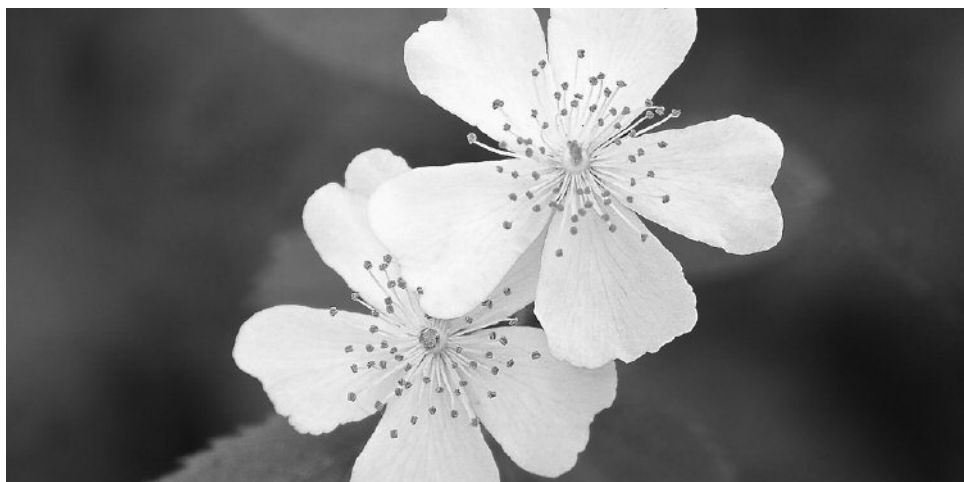
**Program Code:** BOT5100

**Instructor:** Nancy M. Eyster-Smith, Ph.D., botanist

**Fee:** \$254 (Member) /\$300 (Nonmember)

**Limit:** 16

**Certificate:** Core: Adv.FB; Elective: FB





## IN THE FIELD

Nothing beats the experience of seeing native plants in their natural environments. These expert-led excursions provide unique access to varied habitats and unusual native plants.

### FIELD TRIP DIFFICULTY RATING

#### Easy

The hike covers mostly level ground and possibly a few gentle hills; walking surfaces are relatively smooth. Easy hikes are generally suitable for anyone who enjoys walking.

#### Easy/moderate

The hike is not flat, but the elevation gain is less than 500 feet per mile. Hikers should be prepared for some gentle uphill walking and possibly a few short, steeper sections.

#### Moderate

The hike ascends at a steady incline, usually 500-800 feet per mile, which would be unsuitable for someone not accustomed to hiking.

#### Moderate/difficult

The hike is challenging, with an average elevation gain of 500-800 feet per mile and some steeper sections or rougher walking conditions. This designation also describes hikes that are quite steep but relatively short.

#### Difficult

The hike features steep inclines and rough footing or rock scrambles. The gain in elevation averages more than 800 feet per mile and frequently reaches or exceeds 1,000 feet or more per mile.

### NIQUETTE BAY STATE PARK

Niquette Bay State Park contains more than 550 acres of rugged wildlife habitat along the shores of Lake Champlain's Malletts Bay. We'll follow the Ledges Trail over a number of limy cobbles about 1.25 miles to the shore of Lake Champlain, walk along the beach to explore limestone cedar bluffs on the west side of the park, and then head back to the parking area via the Muhley Trail. Bring a bag lunch.

**Habitat:** limestone cobble and limestone cedar bluffs

**Known for:** lush spring flora and copious white trillium

**Difficulty:** easy/moderate

**Saturday, May 7, 10 a.m.-2 p.m.**

Colchester, VT

**Program Code:** FDT4004

**Instructor:** Bob Popp, Botanist, Vermont Fish & Wildlife Department

**Fee:** \$30 (Member) /\$36 (Nonmember)

**Limit:** 15

**Certificate:** Field: FB/Adv.FB





## PONEMAH BOG

This 75-acre bog sanctuary features a 3-acre pond surrounded by a floating sphagnum mat and oak and pitch pine woods. We will see a host of bog plants, including pitcher plants, sundews, and tamaracks. The beauty of this kettle-hole bog is heavenly, and in fact, according to Henry Wadsworth Longfellow, Ponemah means “land of the hereafter.” Bring a bag lunch, a hand lens, and water-proof footwear.

**Habitat:** poor fen

**Known for:** rhodora and carnivorous plants

**Difficulty:** easy

**Saturday, May 7, 10 a.m.-2 p.m.**

Amherst, NH

**Program Code:** FDT1092

**Instructor:** Roland “Boot” Boutwell, naturalist

**Fee:** \$30 (Member) /\$36 (Nonmember)

**Limit:** 12

**Certificate:** Field: FB/Adv.FB

## WILD EDIBLES

Discover dozens of nutritious wild edible plants! Join Russ Cohen, foraging expert and author of *Wild Plants I Have Known...and Eaten*, for a walk at Old Town Hill. You’ll learn how to identify, find, and prepare edible plants safely and responsibly.

**Habitat:** current and former agricultural land, coastal plain, and salt marsh

**Known for:** sumac, wild lettuce, stinging nettle, black raspberry, salt-tolerant plant species

**Difficulty:** easy/moderate

**Sunday, May 8, 1-4 p.m.**

Newbury, MA

**Program Code:** FDT1038

**Instructor:** Russ Cohen, author and naturalist

**Fee:** \$25 (Member) /\$30 (Nonmember)

**Limit:** 20

**Certificate:** Field: FB/Adv.FB

**Cosponsor:** The Trustees of Reservations

## FIELD FARM

Field Farm covers more than 300 acres of diverse woodland and field habitats. This trip will focus on the flora of the rich woods, including blue cohosh and early blue cohosh growing side by side, eastern leatherwood, long-spurred violet, Goldie’s wood fern, and many more wildflowers. We will have great views of Mount Greylock as we walk through the fields, where bobolinks will serenade us. Bring a bag lunch and a hand lens.

**Habitat:** northern hardwood forest, rich mesic forest, and calcareous wet meadow

**Known for:** spring ephemerals, calciphiles

**Difficulty:** easy/moderate

**Sunday, May 15, 10 a.m.-2 p.m.**

Williamstown, MA

**Program Code:** FDT2069

**Instructor:** Julie Richburg, Regional Ecologist, The Trustees of Reservations and Pam Weatherbee, naturalist

**Fee:** \$30 (Member) /\$36 (Nonmember)

**Limit:** 25

**Certificate:** Field: FB/Adv.FB







---

## NORTH TRURO DUNES WALK

Enjoy a walk through the dunes of Cape Cod National Seashore and explore its seasonally flooded wetlands, known as dune slacks. With their distinctive hydrophytic plant communities, dune slacks are an oasis of biodiversity in an otherwise desert-like environment. They are one of the last refuges on the Outer Cape for species such as insectivorous sundews and orchids such as the tuberous grass-pink and rose pogonia. From a wildlife perspective, they are critical habitat for numerous invertebrates and amphibians. Bring a bag lunch.

**Habitat:** dunes and freshwater wetlands

**Known for:** dunes and dune slack habitats

**Difficulty:** easy/moderate

**Friday, May 20, 10 a.m.-2 p.m.**

North Truro, MA

**Program Code:** FDT1o68

**Instructor:** Stephen M. Smith, Plant Ecologist, Cape Cod National Seashore

**Fee:** \$36 (Member) /\$44 (Nonmember)

**Limit:** 18

**Certificate:** Field: FB/Adv.FB

---

## DEVIL'S DEN

At 1,756 acres, Devil's Den is the largest tract of protected land in densely developed Fairfield County. The preserve features a patchwork of woodlands, wetlands, and rock ledges as well as a series of north-south ridges and valleys threaded by streams and swamps. We'll explore a portion of the preserve's natural resources and discuss the history of the site as well.

**Habitat:** mixed hardwood forest, freshwater streams, and wetlands

**Known for:** azaleas, migrating warblers, and wildflowers such as pink lady's slipper

**Difficulty:** easy/moderate

**Friday, May 20, 10 a.m.-12:30 p.m.**

Weston, CT

**Program Code:** FDT6o23

**Instructor:** David Gumbart, Director of Land Management and Cynthia Fowx, Conservation Outreach and Devil's Den Preserve Manager, The Nature Conservancy in Connecticut

**Fee:** \$21 (Member) /\$25 (Nonmember)

**Limit:** 18

**Certificate:** Field: FB/Adv.FB





---

## GIFFORD WOODS STATE PARK

This walk on the Appalachian Trail near Killington and Pico Peak traverses a rich, mature sugar maple forest with a colorful array of wildflowers including trout lily, wild leek, wild ginger, hepatica, blue cohosh, red and painted trilliums, violet, and many more spring ephemerals. The walk follows the Appalachian Trail from the base of Pico Peak to Gifford Woods State Park, the site of an old-growth maple stand. Bring a bag lunch.

**Habitat:** rich mesic forest

**Known for:** rich display of spring wildflowers

**Difficulty:** moderate

**Saturday, May 21, 10 a.m.-2p.m.**

Mendon and Killington, VT

**Program Code:** FDT5045

**Instructor:** Ted Elliman, botanist and author of *Wildflowers of New England*

**Fee:** \$30 (Member) /\$36 (Nonmember)

**Limit:** 15

**Certificate:** Field: FB/Adv.FB

---

## ARCADIA WILDLIFE SANCTUARY

Join us at Arcadia Wildlife Sanctuary to identify a variety of trees, shrubs, and wildflowers and hear stories about their uses by indigenous people, colonial Americans, and modern-day folks. Have you ever found yourself on a hike without a toothbrush or toilet paper? Never fear. On this trip you will learn about plants like Indian toothbrush and the “toilet paper tree,” as well as plants for making herbal teas and a Chippewa remedy for “craziness.” Bring a bag lunch.

**Habitat:** forest, meadow, marsh, and wetland

**Known for:** a plethora of wildflowers

**Difficulty:** easy

**Sunday, May 22, 10 a.m.-2 p.m.**

Easthampton, MA

**Program Code:** FDT2047

**Instructor:** Roland “Boot” Boutwell, naturalist

**Fee:** \$25 (Member) /\$30 (Nonmember)

**Limit:** 16

**Certificate:** Field: FB/Adv.FB

**Cosponsor:** Mass Audubon





---

## WATERBORO BARRENS

The pitch pine/scrub oak forest is one of the rarest forest types in the world, and Waterboro Barrens encompasses the largest intact example of this habitat in New England. The site features low-bush blueberries and woodland sedge; unique wetlands; a host of rare insect, plant, and bird species; and a healthy population of bear, deer, and moose. We will explore the forest and wetlands with an eye for understanding the rich plant and animal life it supports. Bring a bag lunch.

**Habitat:** pitch pine/scrub oak barrens

**Known for:** numerous rare plants and animals

**Difficulty:** easy/moderate

**Monday, June 20, 10 a.m.-2 p.m.**

Waterboro and Shapleigh, ME

**Program Code:** FDT3025

**Instructor:** Don Hudson, President Emeritus, The Chewonki Foundation

**Fee:** \$30 (Member) /\$36 (Nonmember)

**Limit:** 12

**Certificate:** Field: FB/Adv.FB

---

## ESHQUA BOG NATURAL AREA

Join Amanda Weise on a tour of this botanical wonderland and learn what the Society has discovered during ten years of monitoring the site. This 40-acre parcel of land protects an 8-acre wetland known for its abundance of showy lady's-slippers and other wild orchids.

**Habitat:** fen and rich mesic hardwood forest

**Known for:** showy lady's-slippers

**Difficulty:** easy

**Tuesday, June 21, 10 a.m.-12 p.m.**

Hartland, VT

**Program Code:** FDT5007

**Instructor:** Amanda Weise, Ecological Programs Coordinator, New England Wild Flower Society

**Fee:** \$20 (Member) /\$24 (Nonmember)

**Limit:** 12

**Certificate:** Field: FB/Adv.FB

---

## CHAPMAN POND

Join Elizabeth Farnsworth for a walk through rich, rocky woods leading to the shore of Chapman Pond, a rare freshwater tidal marsh recognized as one of The Nature Conservancy's "Last Great Places." Once threatened with deforestation, development, and invasive species, the Chapman Pond Preserve is a thriving conservation area for many species of rare and common plants that grow on its unusual calc-silicate bedrock. Bring a bag lunch and wear sturdy shoes.

**Habitat:** dry rich forest, seeps, streams, and freshwater tidal marsh

**Known for:** wild rice, diverse ferns, sedges, and asters

**Difficulty:** moderate/difficult

**Saturday, June 25, 10 a.m.-2 p.m.**

East Haddam, CT

**Program Code:** FDT6024

**Instructor:** Elizabeth Farnsworth, Senior Research Ecologist, New England Wild Flower Society

**Fee:** \$30 (Member) /\$36 (Nonmember)

**Limit:** 15

**Certificate:** Field: FB/Adv.FB





## ODIORNE POINT STATE PARK

Odiorne Point State Park includes a variety of exemplary and rare plant communities that have been heavily colonized and degraded by invasive plants. These habitats have been undergoing restoration since 2009 using integrated pest management techniques. Learn more about these techniques as well as the lessons learned from the ongoing restoration project.

**Habitat:** coastal rocky headland, mesic and xeric shrub thickets, mesic forest, small back barrier marshes, and coastal salt pond marsh

**Known for:** a variety of marine-influenced habitats

**Difficulty:** easy

**Wednesday, June 29, 1-3 p.m.**

Rye, NH

**Program Code:** FDT4002

**Instructor:** Leonard Lord, Ecologist/District Manager, Rockingham County Conservation District

**Fee:** \$20 (Member) /\$25 (Nonmember)

**Limit:** 20

**Certificate:** Field: FB/Adv.FB

## SCHOODIC POINT

With its granite headlands, rocky beaches, and spruce-fir forests, Schoodic Point Peninsula contains the only portion of Acadia National Park on the mainland. We will hike the shoreline and some inland sites to investigate unique habitats and the plants that live in them, discuss community ecology, and identify many species. Bring a bag lunch.

**Habitat:** open headland, jack pine woodland, maritime spruce-fir forest, and beach strand communities

**Known for:** dramatic and varied landscape with rare and common plants

**Difficulty:** moderate

**Saturday, July 23, 10 a.m.-2 p.m.**

Winter Harbor, ME

**Program Code:** FDT3024

**Instructor:** Jill Weber, consulting botanist

**Fee:** \$30 (Member) /\$36 (Nonmember)

**Limit:** 12

**Certificate:** Field: FB/Adv.FB

## MOUNT HOLYOKE RANGE STATE PARK

Join Elizabeth Farnsworth for a walk to the summit of Mount Norwottuck. Hiking the Metacomet-Monadnock (M&M) Trail, we'll see views of the Pioneer Valley and have lunch at the summit. A visit to the Horse Caves follows, and then we return by the more leisurely Robert Frost Trail. Along the way, we'll see orchids, sedges, ferns, asters, and other plants characteristic of this rich bedrock. Bring a bag lunch.

**Habitat:** trap-rock glades, forest, seeps, and streams

**Known for:** large whorled pogonia (orchid), diverse ferns, sedges, and asters

**Difficulty:** moderate/difficult

**Saturday, July 30, 10 a.m.-2 p.m.**

Amherst, MA

**Program Code:** FDT2070

**Instructor:** Elizabeth Farnsworth, Senior Research Ecologist, New England Wild Flower Society

**Fee:** \$30 (Member) /\$36 (Nonmember)

**Limit:** 25

**Certificate:** Field: FB/Adv.FB





## OLD PEPPER PLACE NATURE RESERVE

Old Pepper Place is a stunning, biologically diverse parcel of land. The 350-acre hill farm includes two small fens and offers wonderful views of forested lands, open fields, and the Green Mountains. During this field trip, you will learn about the Reserve's natural history with a focus on plant life and identification. We will discuss the geology and ecology of the area, look for birds and edible plants, and interpret tracks and other signs of wildlife. Bring a bag lunch, a hand lens, and binoculars; wear proper footwear and clothing.

**Habitat:** upland forest

**Known for:** showy lady's-slipper, pond, fens, historic farm, and views

**Difficulty:** easy/moderate

**Sunday, July 31, 1-4 p.m.**

Washington, VT

**Program Code:** FDT5017

**Instructor:** Arthur Haines, Research Botanist, New England Wild Flower Society and author of *Flora Novae Angliae*

**Fee:** \$28 (Member) / \$35 (Nonmember)

**Limit:** 14

**Certificate:** Field: FB/Adv.FB

**Cosponsor:** Vermont Institute of Natural Science

## ORONO BOG

Orono Bog is a beautiful raised peatland with extensive open area dominated by heaths, sedges, and carnivorous plants. The boardwalk allows visitors to enjoy the wettest portions of the wetland without getting stuck in the mud. Join Arthur Haines in examining the bog's flora in its entirety and

identifying remarkable plants indigenous to this area. Wear waterproof footwear; bring a hand lens, a metric ruler, and a copy of *Flora Novae Angliae* if you have one.

**Habitat:** peatland (bog)

**Known for:** a large array of bog plants, including heaths and carnivorous species

**Difficulty:** easy/moderate

**Sunday, August 14, 1-3:30 p.m.**

Bangor, ME

**Program Code:** FDT3023

**Instructor:** Arthur Haines, Research Botanist, New England Wild Flower Society and author of *Flora Novae Angliae*

**Fee:** \$20 (Member) / \$25 (Nonmember)

**Limit:** 14

**Certificate:** Field: FB/Adv.FB

## VOSSBURG HILLS

This walk follows the Appalachian Trail through an unusual forest community of yellow oak, sugar maple, hemlock, and a variety of wildflowers adapted to dry, high-pH soils. A number of rare plant species have been documented in these hills. The landscape also features outcroppings and cobbles with a fascinating variety of ferns. Bring a bag lunch.

**Habitat:** dry limestone hardwood forest

**Known for:** wildflowers and ferns

**Difficulty:** easy

**Saturday, August 27, 10 a.m.-2 p.m.**

Sheffield, MA

**Program Code:** FDT2068

**Instructor:** Ted Elliman, botanist and author of *Wildflowers of New England*

**Fee:** \$30 (Member) / \$36 (Nonmember)

**Limit:** 15

**Certificate:** Field: FB/Adv.FB

# urban gardening series

The Urban Gardening Series is a set of classes designed to help city dwellers grow healthy, sustainable, and beautiful gardens. Led by New England Wild Flower Society staff in partnership with the Cambridge Conservation Commission, these free classes take place in and around the Cambridge Public Main Library, Cambridge, MA.

---

## GROWING PLANTS FROM SEED

Plants grown from seed have greater genetic diversity and are better adapted to their environment as well as less expensive to produce. In this class, you will learn when and how to collect seeds in the wild; how to collect, clean, and store them; and how to sow and tend for them. Emphasis will be placed on species that can be grown easily and without fancy equipment or a large investment of time.

**Sunday, March 6, 1:30-3 p.m.**

**Program Code:** LEC6553

**Instructor:** Dan Jaffe, Propagator and Stock Bed Grower

---

## MANAGING INVASIVE SPECIES

Invasive plants displace native flora in home and natural landscapes, reducing the diversity of native plant species and affecting the pollinators and other wildlife that depend on them. Learn how to best control invasive plant species to ensure the health and survival of native plant communities.

**Saturday, April 2, 10:30 a.m.-12 p.m.**

**Program Code:** LEC6554

**Instructor:** Amanda Weise, Ecological Programs Coordinator

---

## MANAGING DIFFICULT SOILS

Urban gardens pose a variety of challenges, including difficult soils. In this class, you will learn about different soil types, some ways to tell them apart, and how to test your soil. The focus will be on soil amendments and using the natural resources you already have.

**Saturday, May 7, 10:30 a.m.-12 p.m.**

**Program Code:** LEC6558

**Instructor:** Amy Nyman, Landscape Designer and Owner, Ruby Leaf Design

---

## CONTAINER GARDENING

Find out how to create beautiful container gardens using native perennials, trees, and shrubs. We'll explore materials, types of containers, maintenance, and plant selections that offer a full season of interest and wildlife value.

**Saturday, June 11, 10:30 a.m.-12 p.m.**

**Program Code:** LEC6557

**Instructor:** Anna Fialkoff, Horticulturist



# urban gardening series

---

## TOUGH PLANTS FOR TOUGH PLACES

What will grow well under that hemlock tree? Or out back on the edge of the neighbor's lawn where the goutweed pushed in? How about those really difficult places where nothing grows? Join Dan Jaffe to learn about the toughest of the New England flora, from black cohosh, which thrives in dry, acidic, shady ground, to little bluestem, at home in sunny, barren, dry sites.

**Saturday, July 23, 10:30 a.m.-12 p.m.**

**Program Code:** LEC6555

**Instructor:** Dan Jaffe, Propagator and Stock Bed Grower

---

## PRUNING FUNDAMENTALS

Proper pruning of trees and shrubs improves their health and structure while enhancing their appearance in the landscape. Learn basic pruning principles, how to make proper cuts, when to prune different species, and how to select and maintain tools.

**Saturday, August 13, 10:30 a.m.-12 p.m.**

**Program Code:** LEC6556

**Instructor:** Mark Richardson, Horticulture Director

---

## PLANTING BASICS

Find out which plants thrive in an urban environment and which do not. Learn how to choose the healthiest specimens at the nursery and then how to plant those trees, shrubs, and herbaceous species so that they will thrive for years.

**Saturday, September 17, 10:30 a.m.-12 p.m.**

**Program Code:** LEC6559

**Instructor:** Mark Richardson, Horticulture Director





---

## LAWN ALTERNATIVES

Maintaining a suburban lawn is perhaps our most environmentally harmful landscape practice. Learn how your lawn affects our environment and which native plant alternatives you can use instead to both benefit wildlife and save you time and money.

**Friday, March 4, 1-2:30 p.m.**

Greenwich Audubon, Greenwich, CT

**Program Code:** HOR4106

**Instructor:** Mark Richardson, Horticulture Director, New England Wild Flower Society

**Fee:** \$20 (Member) /\$24 (Nonmember)

**Certificate:** Elective: HD/Adv.HD

**Cosponsor:** Greenwich Audubon

---

## RAIN GARDENS

Rain gardens have the ability to play a significant role in storm-water management in residential landscapes. With development reducing the amount of permeable surface space, rain gardens mitigate storm water by slowing, cleaning, cooling, and infiltrating water before it overwhelms, pollutes, and overheats water bodies. Learn how to be a steward of your own watershed and create a rain garden with plants that are both up to the task and best suited for your site.

**Friday, March 11, 1-2:30 p.m.**

Greenwich Audubon, Greenwich, CT

**Program Code:** HOR4073

**Instructor:** Anna Fialkoff, Horticulturist, New England Wild Flower Society

**Fee:** \$20 (Member) /\$24 (Nonmember)

**Certificate:** Elective: HD/Adv.HD

**Cosponsor:** Greenwich Audubon



---

## TRANSFORMING YOUR YARD INTO HABITAT

Learn what you can do to support pollinators and other wildlife in your yard to counteract increased pressures from habitat loss. This class will encourage thinking about a garden from an ecological perspective, as Daphne Minner shares practical advice gleaned from the transformation of her urban yard into productive habitat.

**Saturday, March 12, 1-3 p.m.**

Garden in the Woods, Framingham, MA

**Program Code:** HOR2011

**Instructor:** Daphne Minner, gardener and author

**Fee:** \$26 (Member) /\$32 (Nonmember)

**Limit:** 20

**Certificate:** Elective: HD/Adv.HD

---

## KILL YOUR LAWN

According to NASA, more surface area in the United States is covered by lawn than by any other single irrigated crop. Lawns are resource-heavy, requiring irrigation, fertilizer, and pesticides to thrive in our climate. Learn why you should “kill your lawn” and how to replace it with beautiful and environmentally friendly native plantings. Bring a bag lunch.

**Sunday, March 13, 9 a.m.-3 p.m.**

Garden in the Woods, Framingham, MA

**Program Code:** HOR4102

**Instructor:** Mark Richardson, Horticulture Director, New England Wild Flower Society

**Fee:** \$75 (Member) /\$91 (Nonmember)

**Limit:** 30

**Certificate:** Elective: HD/Adv.HD

**Cosponsor:** Mass Audubon

---

## NATIVE EDIBLES

Wild edibles are all around us, and whether you are interested in eating healthfully or sustainably, or just for enjoyment, knowing how to recognize and prepare native edibles is a fun and useful skill. Join Dan Jaffe to explore the numerous woodland and meadow plants you can cultivate in your home garden. We will discuss preparation and provide recipes.

**Tuesday, March 15, 6:30-8 p.m.**

Taunton, MA

**Program Code:** HOR6019

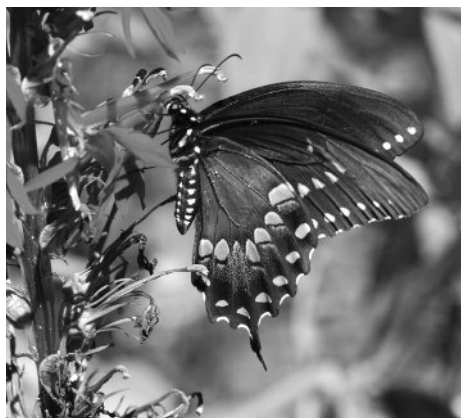
**Instructor:** Dan Jaffe, Propagator and Stock Bed Grower, New England Wild Flower Society

**Fee:** \$20 (Member) /\$24 (Nonmember)

**Certificate:** Elective: all certificates

**Cosponsor:** South Coast Innovator Labs





---

## POLLINATOR PLANTS FOR LANDSCAPERS

With pollinator decline in the headlines, the demand for gardens that attract pollinators such as butterflies and bees has exploded, and landscape designers are looking to create pollinator gardens without compromising beauty and functionality. Join Dan Jaffe to learn how to create beautiful, low-maintenance, functional spaces that also act as ecological powerhouses in the landscape.

**Wednesday, March 23, 10 a.m.-3 p.m.**

Greenwich Audubon, Greenwich, CT

**Program Code:** HOR1199

**Instructor:** Dan Jaffe, Propagator and Stock Bed Grower, New England Wild Flower Society

**Fee:** \$66 (Member) /\$80 (Nonmember)

**Cosponsor:** Greenwich Audubon

---

## MEASURING SOIL HEALTH AND MANAGING SITE CHALLENGES IN AN URBAN LANDSCAPE

This hands-on, indoor/outdoor workshop introduces the concept of the soil health assessment and discusses the use of soil health indicators for evaluating the biological, chemical, and physical attributes of soil as

they pertain to the constraints of a site. Use of these soil health indicators will help landscape architects, garden designers, arborists, and landscape professionals to determine the appropriate products, equipment, and techniques needed to correct soil problems and to develop a seasonal maintenance plan for a newly installed landscape, from installation to establishment and on to maturity. Bring a bag lunch.

**Sunday, April 24, 9 a.m.-3:30 p.m.**

Garden in the Woods, Framingham, MA

**Program Code:** HOR3802

**Instructor:** Chuck Sherzi, Jr., Horticulturist, Sherzi & Company, LLC, Fine Garden Maintenance

**Fee:** \$86 (Member) /\$104 (Nonmember)

**Limit:** 30

**Certificate:** Elective: HD/Adv.HD

**Cosponsor:** Ecological Landscape Alliance

---

## NATIVE HERBACEOUS PLANT MATERIALS: EARLY SEASON

Discover numerous native perennials suitable for New England gardens. We'll look at native herbaceous plants that bloom in spring and early summer, focusing on how to use them effectively to create beautiful landscapes and gardens. Be prepared to walk in the Garden each day. This class is appropriate for landscape professionals and avid home gardeners. It is a companion to Native Herbaceous Plant Materials: Late Season, but can be taken separately.

**Thursdays, April 28, May 12, June 9,**

**Tuesday, May 24, 1-3:30 p.m.**

Garden in the Woods, Framingham, MA

**Program Code:** HOR1000

**Instructor:** Jessie Panek, landscape designer

**Fee:** \$154 (Member) /\$182 (Nonmember)

**Limit:** 12

**Certificate:** Core: HD; Elective: Adv.HD

---

---

## LOW-MAINTENANCE DESIGN WITH NATIVE PLANTS

Using strategies based on the observation and emulation of naturally existing plant communities, landscape designer Owen Wormser will share techniques for creating beautiful, low-maintenance gardens. Learn how to design a unique space and discover the functional and aesthetic qualities of native plants. In this interactive format, you are encouraged to bring your ideas along with photographs, plans, or sketches of your property.

**Saturday, April 30, 1-4 p.m.**

Nasami Farm Nursery, Whately, MA

**Program Code:** HOR4044

**Instructor:** Owen Wormser, Principal, Abound Design

**Fee:** \$40 (Member) /\$48 (Nonmember)

**Limit:** 16

**Certificate:** Elective: HD/Adv.HD

**Cosponsor:** Hitchcock Center for the Environment



---

## UNDERSTANDING SCALE IN THE GARDEN

When it comes to scale in our environment, we know whether we're feeling comfortable or not quite right. Yet in our own gardens, scale tends to be overlooked, even though relationships in the garden change as plants mature. In this hands-on design workshop, we will explore how and why size matters in a successful landscape.

**Sunday, May 1, 2:30-6:30 p.m.; Monday, May 2, 6:30-9 p.m.; Thursday, May 5, 6:30-9 p.m.**

Garden in the Woods, Framingham, MA

**Program Code:** PDW4031

**Instructor:** Cheryl Salatino, Landscape Designer, Dancing Shadows Garden Design, and Massachusetts Certified Horticulturist

**Fee:** \$135 (Member) /\$162 (Nonmember)

**Limit:** 16

**Certificate:** PDW: Adv.HD; Elective: HD

---

## DESIGNING GARDENS FOR SMALL SPACES

Small garden spaces often present the designer with the challenge of how to realize big ideas in tight quarters. Yet small sites don't mean the garden must lack interest. This hands-on design workshop will tackle the garden as a composition by exploring enclosed space, lighting, plant characteristics, and personal expression. We will visit Cambridge gardens to inspire your designs.

**Tuesdays, May 31 and June 14, 6:30-9 p.m.; Sunday June 5, 9 a.m.-12 p.m.**

Garden in the Woods, Framingham, MA, and field sites

**Program Code:** PDW4026

**Instructor:** Cheryl Salatino, Landscape Designer, Dancing Shadows Garden Design, and Massachusetts Certified Horticulturist

**Fee:** \$120 (Member) /\$144 (Nonmember)

**Limit:** 16

**Certificate:** PDW: Adv.HD; Elective: HD

## GROW YOUR OWN MEADOW

Interested in establishing a meadow or caring for an existing one? Kathy Connolly will explain what a meadow is and teach you about the role of native species in a meadow, the basics of meadow ecology, site selection, low-impact site preparation techniques, and steps you can take right now to get started. After the lecture, you can purchase books and native plants grown by the Society's Nasami Farm Nursery.

**Thursday, June 2, 5-8:30 p.m.**

Nasami Farm Nursery, Whatley, MA

**Program Code:** HOR4304

**Instructor:** Kathy Connolly, Landscape Designer, Speaking of Landscapes, LLC

**Fee:** \$40 (Member) /\$48 (Nonmember)

**Limit:** 20

**Certificate:** Elective: HD/Adv.HD

## NATIVE PLANTS FOR PROFESSIONALS

Join Dan Jaffe to learn about the best native plant materials available today for use in the design and landscape trades. Covering everything from plants for tough spots to specialty plants for specific habitats, this class will add a host of less-familiar native species to your plant palette.

**Sundays, June 5, 12, 10 a.m.-3 p.m.**

Garden in the Woods, Framingham, MA

**Program Code:** HOR1200

**Instructor:** Dan Jaffe, Propagator and Stock Bed Grower, New England Wild Flower Society

**Fee:** \$162 (Member) /\$190 (Nonmember)

**Limit:** 20

**Certificate:** Core: Adv.HD; Elective: HD

**Cosponsor:** Ecological Landscape Alliance





## SHADY EDIBLES

Tomatoes, peppers, eggplant, and a host of other vegetables grow well in sunny spaces, but what edibles can you grow in the shade? Join Dan Jaffe to learn about the various native perennial edibles that thrive in shady environments. You will discover a wide variety of choice edibles from the leaves of ramps, the stems of Solomon's seal, and the fruit of Solomon's plume.

**Wednesday, June 22, 1:30-3:30 p.m.**

Garden in the Woods, Framingham, MA

**Program Code:** HOR2958

**Instructor:** Dan Jaffe, Propagator and Stock Bed Grower, New England Wild Flower Society

**Fee:** \$23 (Member) /\$28 (Nonmember)

**Limit:** 35

**Certificate:** Elective: HD/Adv.HD

## CONSERVING AND GARDENING FOR MONARCHS

Learn about the monarch butterfly—its natural history, the reasons for its decline, and the many conservation efforts that are currently underway along its migration pathway. We will also discuss how you can help the monarch in your own yard by planting a native pollinator garden. After the lecture, we will walk around the Garden to see plants that support monarchs.

**Sunday, June 26, 10 a.m.-12 p.m.**

Garden in the Woods, Framingham, MA

**Program Code:** HOR4260

**Instructor:** Katie Banks Hone, gardener/educator, The Monarch Gardener

**Fee:** \$24 (Member) /\$30 (Nonmember)

**Limit:** 30

**Certificate:** Elective: HD/Adv.HD

## LANDSCAPE FOR LIFE

This intensive introductory course will provide you with the knowledge, skills, and understanding to create a great-looking garden that is healthier for you, your family, and the environment. This class is based on the principles of the Sustainable Sites Initiative, the nation's first rating system for sustainable landscapes. Bring a bag lunch.

**Tuesdays, July 12, 19, 26, August 2, 9 a.m.-12 p.m.**

Garden in the Woods, Framingham, MA

**Program Code:** HOR3720

**Instructor:** Mark Richardson, Horticulture Director, New England Wild Flower Society

**Fee:** \$185 (Member) /\$218 (Nonmember)

**Limit:** 16

**Certificate:** Core: Adv.HD; Elective: HD

**Cosponsor:** Ecological Landscape Alliance



---

## NATIVE HERBACEOUS PLANT MATERIALS: LATE SEASON

Discover numerous native perennials suitable for New England gardens. We'll look at native herbaceous plants that bloom in late summer and fall, focusing on how to use them effectively to create beautiful landscapes and gardens. Be prepared to walk in the Garden each day. This class is appropriate for landscape professionals and avid home gardeners. It is a companion to Native Herbaceous Plant Materials: Early Season, but may be taken separately.

**Wednesdays, July 20, August 24, 1-3:30 p.m.**

Garden in the Woods, Framingham, MA

**Program Code:** HOR1050

**Instructor:** Jessie Panek, landscape designer

**Fee:** \$77 (Member) /\$91 (Nonmember)

**Limit:** 12

**Certificate:** Core: HD; Elective: Adv.HD

---

## POLLINATORS IN PERIL

Habitat loss, pesticides, and climate change are all contributing to the loss of pollinator species in the United States. Learn how your garden can become a safe haven for pollinators. We'll begin indoors with a lecture, then head out to South Street Farm to learn about urban pollinator habitats including cedar-pole hives for mason and leaf-cutter bees, honey bee hives, meadows, and plants that support pollinators.

**Saturday, August 6, 10 a.m.-12 p.m.**

Green City Growers and South Street Farm, Somerville, MA

**Program Code:** HOR4262

**Instructor:** Mark Richardson, Horticulture Director, New England Wild Flower Society and Jess Bloomer, Program and Farm Manager, Groundwork Somerville

**Fee:** \$20 (Member) /\$24 (Nonmember)

**Limit:** 30

**Certificate:** Elective: HD/Adv.HD

**Cosponsor:** Groundwork Somerville

# horticulture + gardening

---

## NATIVE WOODY PLANT MATERIALS

Explore the huge variety of native trees, shrubs, and woody vines. Learn which species grow well in shade, which support local wildlife, and how you should stagger your plantings for continuous bloom, fruit production, and fall color. We'll discuss growth characteristics, cultural requirements, and best horticultural uses. The course will include lectures and walks in the Garden as well as a field trip to The Arnold Arboretum. Bring a bag lunch.

**Thursday, September 1, 10 a.m.-2:30 p.m.;**

**Thursday, September 8, 11 a.m.-1 p.m.;**

**Thursday, September 15, 10 a.m.-2:30 p.m.**

Garden in the Woods, Framingham, MA, and The Arnold Arboretum, Boston, MA

**Program Code:** HOR1100

**Instructor:** Dan Jaffe, Propagator and Stock Bed Grower, New England Wild Flower Society

**Fee:** \$170 (Member) /\$200 (Nonmember)

**Limit:** 16

**Certificate:** Core: HD; Elective: Adv.HD

---

## HORTICULTURAL TECHNIQUES

Good horticultural practices form the backbone of any successful garden and understanding how to apply these practices is the first step toward becoming a horticulturist. Learn how to select the right plant for the right place and how to plant and care for native plants. Participants will study the proper techniques for transplanting, soil preparation, mulching, watering, pruning, maintenance, winterizing the garden, and preparing it for spring. Bring a bag lunch.

**Wednesdays, November 2, 9, 16, 10 a.m.-3 p.m.**

Garden in the Woods, Framingham, MA

**Program Code:** HOR3600

**Instructor:** New England Wild Flower Society Horticulture Staff

**Fee:** \$225 (Member) /\$270 (Nonmember)

**Limit:** 16

**Certificate:** Core: HD; Elective: Adv.HD



## RESIDENTIAL LANDSCAPE DESIGN

This multisession course, appropriate for beginners, tackles the different aspects of the landscape design process. Workshop sessions will focus on design methods using site analysis techniques and schematic design tools. You will consult with the instructor and work on a project of your own choosing. Discussions about plants and habitat will be interspersed with lectures on design principles, including criteria for making plant choices and determining placement in the landscape. A list of required materials will be provided at the first class.

**Tuesdays, February 7, 14, 21, 28;  
March 7, 14, 21, 2017, 6-8 p.m.**

Garden in the Woods, Framingham, MA

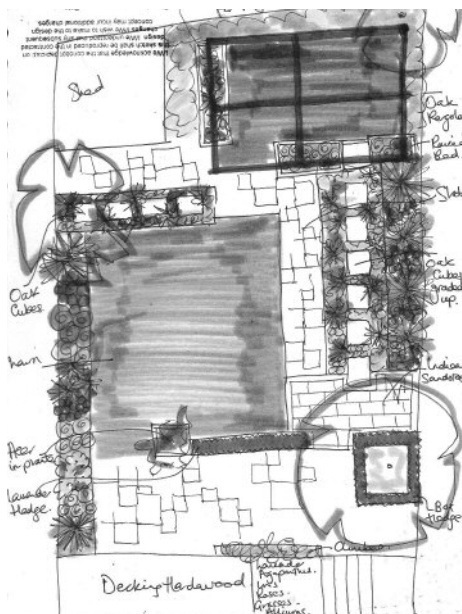
**Program Code:** HOR4002

**Instructor:** Karen Sebastian, Principal, Karen Sebastian, LLC, Landscape Architecture

**Fee:** \$215 (Member) /\$254 (Nonmember)

**Limit:** 12

**Certificate:** Core: HD; Elective: Adv.HD



## UNDERSTANDING AND MANAGING SOILS

Whether you are an experienced gardener or a novice, this class will help you develop a better understanding of the importance of soil to your garden. Learn how to evaluate and improve your garden's soil, how to choose the right plants for your soil conditions, and how to maintain soil health and fertility through organic practices. Bring a bag lunch.

**Wednesdays, February 8, 15, 22, 2017,  
10 a.m.-1:30 p.m.**

Garden in the Woods, Framingham, MA

**Program Code:** HOR3904

**Instructor:** Mark Richardson, Horticulture Director, New England Wild Flower Society

**Fee:** \$138 (Member) /\$163 (Nonmember)

**Limit:** 16

**Certificate:** Core: HD/Adv.HD; Elective: all certificates







## IN THE GARDEN

Tour exceptional gardens, talk with homeowners, and learn about the plants they use and the techniques they employ to create functional and beautiful spaces that are harmonious with nature.

### YANKEE GARDEN TOUR

We'll begin the day with a tour of the beautiful garden at Old Farm in Wenham, designed by landscape architect Ellen Biddle Shipman in 1912. The Colonial Revival-style garden with rectangular garden beds and gravel walks is compatible with this old New England farmhouse, whose oldest parts date to 1659. The garden features daffodils, peonies, iris, phlox, and many native asters. After lunch we will tour Long Hill. The grounds boast five cultivated acres containing more than 500 species of plants, more than 100 acres of woodland, an apple orchard, meadows, a children's garden, and an organic farm. Bring a bag lunch.

**Tuesday, April 26, 10 a.m.-2 p.m.**

Wenham, MA, and Beverly, MA

**Program Code:** HDT2027

**Instructor:** Mary Ann Streeter, gardener extraordinaire and tour guide at Long Hill

**Fee:** \$24 (Member) /\$28 (Nonmember)

**Limit:** 20

**Certificate:** Field: HD/Adv.HD

### WATERTOWN LIFE-FRIENDLY GARDENS TOUR

Join us for a tour of three urban gardens that are brimming with life and managed without the use of chemicals. The first garden is a work of art and home to many bees, some of which live in hives built on-site. The second garden illustrates what happens when a landscape designer and an ecologist make a garden together—the result is a biodiverse garden with four-season interest. The third of these three special places is a garden on a hill that utilizes all of nature's gifts with its solar panels, rain barrels, and compost pile.

**Thursday, May 19, 10 a.m.-12 p.m.**

Watertown, MA

**Program Code:** HDT2026

**Instructor:** Sharon Bauer, Monica Fairbairn, Henrietta Light, gardeners extraordinaire

**Fee:** \$18 (Member) /\$20 (Nonmember)

**Limit:** 16

**Certificate:** Field: HD/Adv.HD





---

## KEEPING IT SIMPLE

Tour this extensive, award-winning woodland native plant garden and sunny rock garden. Learn about the techniques and strategies that simplified the initial garden creation and ease long-term maintenance, enabling the owners to do all the routine work themselves.

**Sunday, June 5, 10-11:30 a.m.**

New London, NH

**Program Code:** HDT4005

**Instructor:** Thelma Hewitt, gardener extraordinaire and Honorary Trustee, New England Wild Flower Society

**Fee:** \$18 (Member) /\$20 (Nonmember)

**Limit:** 20

**Certificate:** Field: HD/Adv.HD

---

## NATIVES, POLLINATORS, AND YOUR BACKYARD

Explore the possibilities of creating a pollinator-friendly garden by integrating native plants and a layered woodland margin into your own backyard. Join this owner-led tour of her extensive private garden for design ideas and plant choices.

**Thursday, July 28, 10 a.m.-12 p.m.**

Dover, MA

**Program Code:** HDT2028

**Instructor:** Michele Feinsilver, educator and naturalist

**Fee:** \$18 (Member) /\$20 (Nonmember)

**Limit:** 16

**Certificate:** Field: HD/Adv.HD



All programs are for children with adult companions.

---

## STORY TIME AND MUSICAL PLAY AT GARDEN IN THE WOODS

Children will listen to a nature-themed story, sing songs related to topic of the day, and make nature-crafts. Stories are geared for children ages three to six. Afterward, children are invited to explore the local flora and fauna in the Garden, play in the Family Activity Area, or pick up a Scavenger Hunt Card and take a walk through the woods.

**Saturdays, April 30, May 14, 28, June 11, 25, July 9, 23, August 13, 27, September 10, 24, 10:30-11:30 a.m.**

Family Activity Area, Garden in the Woods, Framingham, MA

**Instructor:** Elaine Kessler, professional storyteller and children's educator

**Fee:** Free with Garden admission

---



---

## SPRING EQUINOX FROLIC

Spring arrives with the equinox on March 20. The weather continues to moderate, the first flowers begin to poke their heads above ground, and the days get longer. Come celebrate this joyous event with poetry, stories, and lore. We'll learn why the seasons occur and why day-length changes from season to season. Then we will go outside for a walk to look for signs of spring. Preregistration and payment is required for each adult and child.

**Sunday, March 20, 1-3 p.m.**

Garden in the Woods, Framingham, MA

**Program Code:** FAM1250

**Instructor:** Roland "Boot" Boutwell, naturalist

**Fee:** \$12 (Member) /\$14 (Nonmember)

**Limit:** 20

**Cosponsor:** Mass Audubon



---

## SALAMANDER CELEBRATION

Join our annual celebration of this shy and beautiful woodland creature and its amphibian cousins that call Garden in the Woods—and perhaps your own backyard—home. You will walk the trails and examine our vernal pools for salamanders and wood frogs and their egg masses. The class will conclude with a salamander craft and an origami jumping-frog contest. Preregistration and payment are required for each adult and child.

**Sunday, April 3, 1:30-3:30 p.m.**

**Garden in the Woods, Framingham, MA**

**Program Code:** FAM3600

**Instructor:** Tracy Phipps, teacher and naturalist

**Fee:** \$12 (Member) /\$14 (Nonmember)

**Limit:** 24

---

## VERNAL POOLS ARE COOL

Join us as we explore vernal pools. These mysterious springtime pools often come and go without much notice, but they are an important habitat for many creatures. Learn why vernal pools are so special and why some animals' lives depend on them. We'll venture out into the woods to examine a vernal pool firsthand, and then use microscopes to observe some of its smallest residents, like fairy shrimp, which live their entire lives in about one week. Preregistration and payment are required for each adult and child.

**Saturday, May 21, 1:30-3:30 p.m.**

**Program Code:** FAM3603

**Instructor:** Tracy Phipps, teacher and naturalist

**Fee:** \$12 (Member) /\$14 (Nonmember)

**Limit:** 24





## FAMILY HIKES

Looking for a Saturday morning family adventure? Join us for a guided nature walk. Our naturalists will lead you on short walks, pointing out interesting plants, rocks, insects, and wildlife and illustrating how everything in nature is connected. Preregistration and payment is required for each adult and child. Children under two admitted free of charge.

---

### WATER, WATER EVERYWHERE!

Spring is the perfect time to explore our wetlands. Where does the water come from, where does it go, and what lives in there? Join us to explore the Concord River wetland. We'll climb an observation tower to get a bird's eye view, walk out on a dike lined with cattails to look for plants and animals, and try to spot otters in the river. You never know what we will see along the trail—frog, snake, turtle, muskrat, butterfly, birds—but it is always busy! Wear boots.

**Saturday, May 7, 10-11 a.m.**

Concord Division of Great Meadows National Wildlife Refuge, Concord, MA

**Program Code:** FAM1108

**Instructor:** Carol Milligan, teacher and naturalist

**Fee:** \$6 (Member) /\$8 (Nonmember)

**Limit:** 16

---

### FISH WEIR TO FROG POND

Come along to investigate the Sudbury River wetland. There is so much to explore! We will walk along the river's edge peering through reeds to glimpse ducks; hike up a drumlin to view the river and marsh where Native Americans set their fishing weirs; wander through pine woodland to discover a glacial kettle hole; descend a steep slope to a squishy wetland, lush with ferns; and creep up on the fish pond to surprise a frog. Wear boots.

**Saturday, June 25, 10-11 a.m.**

Sudbury Division of Great Meadows National Wildlife Refuge, Concord, MA

**Program Code:** FAM1110

**Instructor:** Carol Milligan, teacher and naturalist

**Fee:** \$6 (Member) /\$8 (Nonmember)

**Limit:** 16

---

### ACTON ARBORETUM BOG

Bogs are really cool places with really cool plants. We'll meet plants whose fruits are used for jams, jellies, and pies; learn about a plant used by the Chippewa people as a remedy for "craziness"; and see a plant that eats insects. Come along and learn how to identify some of these plants and hear fun and interesting stories about them.

**Saturday, July 9, 10-11 a.m.**

Acton Arboretum, Acton, MA

**Program Code:** FAM1036

**Instructor:** Roland "Boot" Boutwell, naturalist

**Fee:** \$6 (Member) /\$8 (Nonmember)

**Limit:** 16



# become a member

## For immediate discounts on programs, join or renew when you register.

Members help conserve and promote the region's native plants to ensure healthy, biologically diverse landscapes.

### Membership benefits include:

- 20% discount on educational programs throughout New England
- Annual subscription to Society publications
- Monthly member e-newsletter
- Discounts at a wide range of regional and mail-order nurseries through our Nursery Partner Program and our Garden Shops
- Borrowing privileges at our 4,500-volume botanical library (*Individual with Garden Access level and up*)
- Invitations to special, members-only events (*Individual with Garden Access level and up*).

### Membership levels

- Individual \$40
- Individual with Garden Access \$55
- Family/Friends \$75
- Contributor \$115
- Supporter \$250
- Sustainer \$500
- Conservation Circle \$1,000+

For a full description of member benefits, please visit [www.newenglandwild.org/membership](http://www.newenglandwild.org/membership) or call 508-877-7630 x3104.

## registration policies

Advance registration is required for all fee-based programs and is accepted on a first-come, first-served basis upon full payment. Before your class, you will receive program locations and any recommended reading and supplies. Early registration is encouraged; programs with insufficient registration may be cancelled three to five business days before the scheduled start date. If your requested program is filled, you will be put on a waiting list and your credit card will not be charged or your check will be returned. If space in the program becomes available, you will be contacted according to your position on the waiting list.

### EQUAL ACCESS

If you need assistance or special accommodations, call 508-877-7630, ext. 3303, at the time you register or as soon as possible thereafter.

### SOCIETY CANCELLATIONS, CHANGES, AND INCLEMENT WEATHER

The Society reserves the right to cancel programs, change times or locations, and substitute instructors. If a program is cancelled by the Society, you will receive a full refund. In the event of any program change, you will be notified as soon as possible. Programs run rain or shine. However, in the event of extremely inclement weather, the Public Programs Department or instructor will make every effort to inform you by telephone or email of any change in plans.

No refunds or transfers can be given for withdrawals within a week of the program start date, for programs already in progress, or for class sessions you have not attended.

# how to register

## REGISTER ONLINE

Visit [www.newenglandwild.org/programs](http://www.newenglandwild.org/programs).  
We accept Visa or MasterCard.

## REGISTER BY PHONE

Call 508-877-7630, ext. 3303.  
We accept Visa or MasterCard.

## REGISTER BY MAIL

Complete the registration form below and mail it with your payment to: Public Programs, New England Wild Flower Society, 180 Hemenway Road, Framingham, MA 01701. Use a separate copy of the form for each registrant. Make checks payable to New England Wild Flower Society. Please do not mail cash.

Name of person filling out form: .....

Participant's name (if different): ..... Age (if under 18): .....

Address: .....

City, State, ZIP: .....

Email: .....

Phone: Day ..... Evening .....

Program code	Program name	Start date	Fee
.....	.....	.....	.....
.....	.....	.....	.....
.....	.....	.....	.....
.....	.....	.....	.....
.....	.....	.....	.....

- Yes, I'm a member of New England Wild Flower Society member # .....
- I am a current member of ..... (cosponsor organization) .....
- I want to join the Society. Please indicate membership-level fee here .....
- I would like to enroll in a Certificate Program  \$30 (This is a one-time fee.) .....
- I would like to make a gift to the Annual Fund .....

**PAYMENT** Total: \$ .....

- Check enclosed (payable to New England Wild Flower Society)
- Credit card # .....
- Visa  MasterCard ..... Exp. date ..... CVC code .....
- Name on card .....
- Billing address (if different from above) .....
- Signature .....

I have read and accept the Cancellation and Refund Policy  Yes  No

JOIN TED ELLIMAN  
FOR A SOCIETY-SPONSORED TRIP  
TO

# China

July 8-21, 2016

## A Backroads Journey to Fascinating Cultures and Spectacular Landscapes!

The Tibetan highlands of Sichuan are home to a spectacular array of landscapes, flora, and wildlife, with mountains soaring to 20,000 feet and an extraordinary diversity of plants. Little wonder the region has been a magnet for plant explorers for over 150 years. The spruce-, fir-, and hardwood-forested slopes of the mountains, often with dense understories of bamboo, are among the last strongholds of the giant panda. Join the Society's Ted Elliman as we explore forests, meadows, alpine communities, and the culture of the traditionally nomadic Tibetan people who inhabit the eastern edge of the Roof of the World.

Details at  
[www.newenglandwild.org/learn/china](http://www.newenglandwild.org/learn/china)



**NEW ENGLAND WILD FLOWER SOCIETY**

HEADQUARTERS & GARDEN IN THE WOODS

180 Hemenway Road

Framingham, Massachusetts 01701-2699

ADDRESS SERVICE REQUESTED